



OVA Deployment Guide

V8.3

www.seqrite.com

Copyright Information

Copyright © 2008–2024 Quick Heal Technologies Ltd. All Rights Reserved.

No part of this publication may be reproduced, duplicated, or modified in any form or incorporated into any information retrieval system, electronic or any other media or transmitted in any form without prior permission of Quick Heal Technologies Limited, Marvel Edge, Office No.7010 C & D, 7th Floor, Viman Nagar, Pune 411014, Maharashtra, India.

Marketing, distribution or use by anyone barring the people authorized by Quick Heal Technologies Ltd. is liable to legal prosecution.

Trademarks

Seqrite and DNAScan are registered trademarks of Quick Heal Technologies Ltd. while Microsoft and Windows are registered trademarks of Microsoft Corporation. Other brands and product titles are trademarks of their respective holders.

License Terms

Installation and usage of Seqrite Endpoint Protection is subject to user's unconditional acceptance of the Seqrite end-user license terms and conditions.

To read the license terms, visit <http://www.seqrite.com/eula> and check the End-User License Agreement for your product.

Contents

- 1. Overview 2
 - OVA Details 2
- 2. Prerequisites 2
- 3. Step 1: Deploy OVA on VirtualBox 3
- 4. Step 2: Configure EPP Server 5
- 5. Step 3: Log on to EPP Server 11
- 6. Exiting the Setup 11

Overview

This document helps you, deploy OVA on the VirtualBox, and set up Seqrite Endpoint Protection server.

OVA (Open Virtualization Appliance) file contains a compressed version of a virtual machine. When you deploy an OVA file, the virtual machine is extracted and imported into the virtualization software installed on your computer.

The OVA build file is provided to address any of the following scenarios at the customer end.

- Ubuntu 22.04 LTS machine is not available.
- Only Windows machines are available.

This OVA will create an Ubuntu 22.04 LTS machine on top of the VirtualBox and then you can proceed through the configuration of the pre-installed EPP server.

OVA Details

- OVA File name: EPP_8.3_UBUNTU22.ova
- Oracle Virtual box version: 7.0.8
- RAM: 8 GB

Prerequisites

- Physical Windows Machine with RAM \geq 16 GB
- Windows 10 and above OR Windows server 2019 and above
- Disk space: 60 GB and above.
- CPU: 4 Core (x86-64) or above.
- The VT-x must be enabled in the physical machine's BIOS.
- Oracle Virtual Box 7.0.8
- EPP_8.3_UBUNTU22.ova build file.
- Keep the following details ready and handy.
 - Product Key
 - Static IP Address
 - Gateway
 - Subnetmask

- DNS

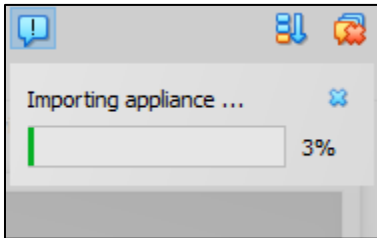
Note: For seamless working of OVA over virtual box, it is recommended to have only one hypervisor installed on the system. Other than the Oracle Virtual Box, ensure that no other hypervisor is installed on the system.

Please be advised that the images featured in this guide correspond to a previous release.

Step 1: Deploy OVA on VirtualBox

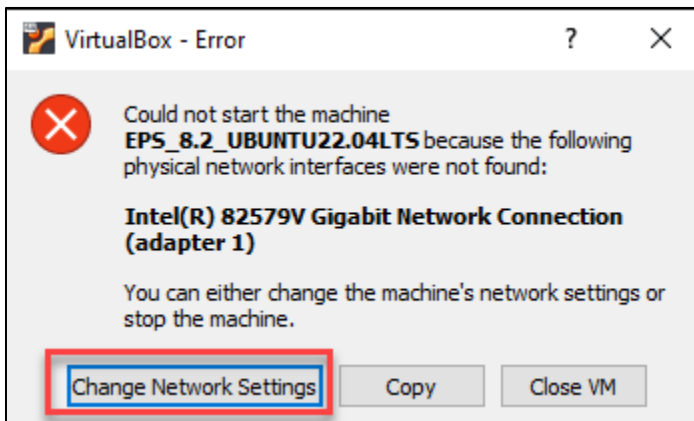
Follow these steps to deploy OVA on the VirtualBox.

1. Download and install Oracle VM VirtualBox on Windows machine.
2. Open the VirtualBox.
3. Go to **File > Import Appliance**.
4. In this step, choose a virtual appliance file to import. Click **Browse** and select **EPP_8.3_UBUNTU22.ova** file.
5. Click **Next** and follow the wizard.
6. Click **Import**.



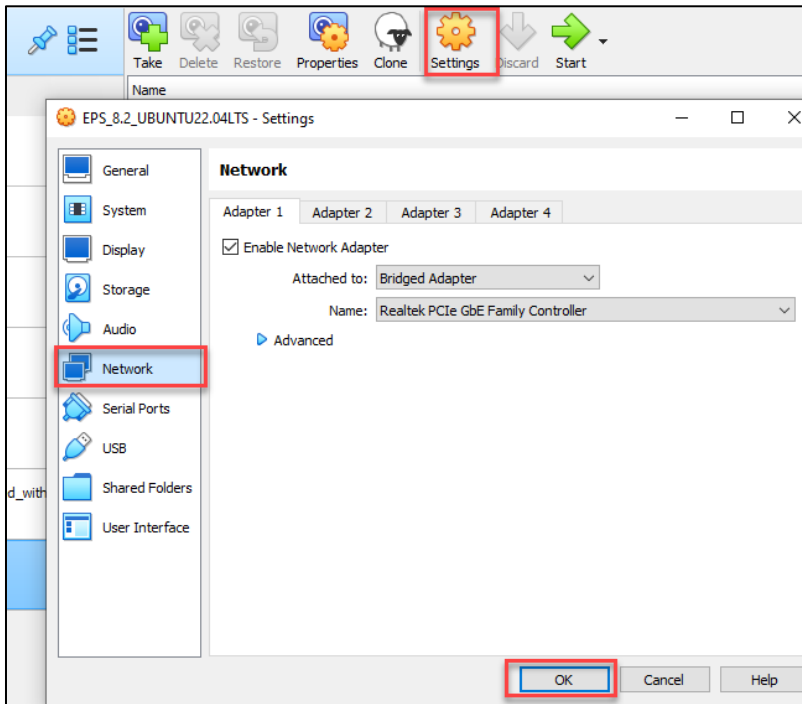
When the Import is complete, VirtualBox creates VM with Ubuntu. On this, you will configure the pre-installed EPP 8.3 server.

7. Start the VM. The Network Error prompt appears.
8. Click **Change Network Settings**.

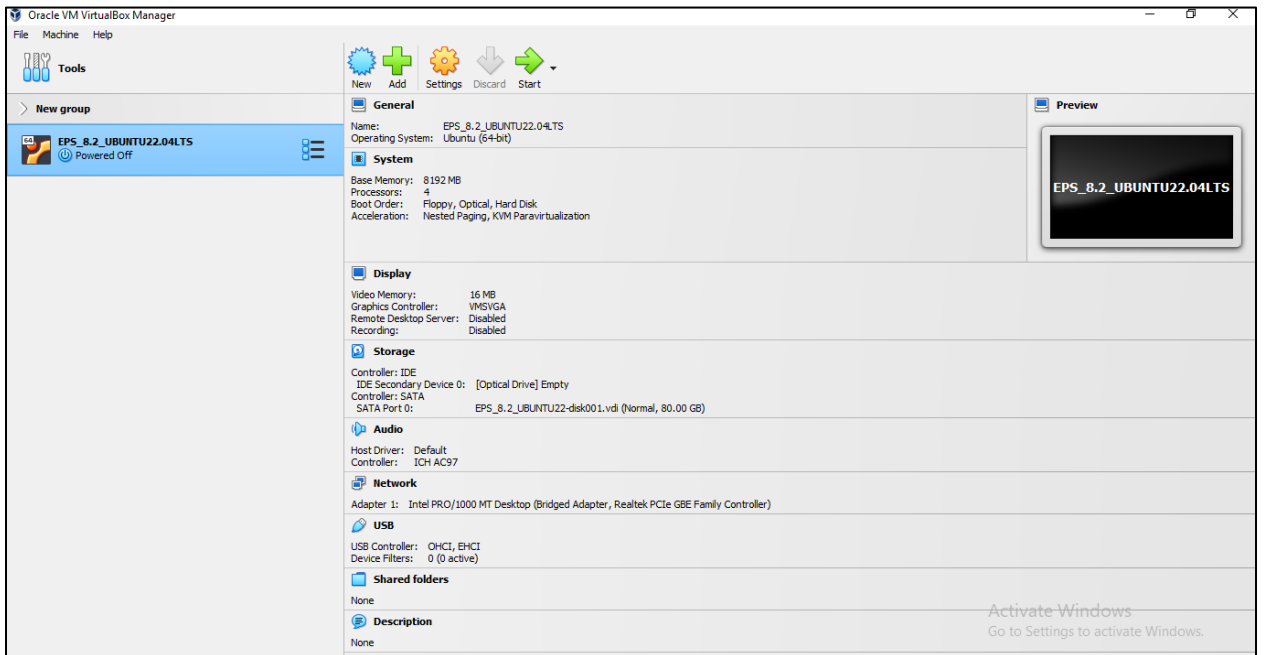


The error prompt disappears.

9. Go to **Settings > Network**. Click **Ok**.



10. Oracle VM VirtualBox Manager window appears.



OVA is deployed successfully on the VM.

11. Click **Start** icon to start the VM. The VM is ready for use.

Step 2: Configure EPP Server

1. On the VM, login with the given credentials.

Note: It is recommended to change the password after installing the EPP server.

2. Provide the following details one after another and hit [Enter].
 - Static IP Address
 - Subnetmask
 - Gateway
 - DNS

```
Welcome to OVA pre-installed product deployment wizard
This will guide you through rest of the configuration process
-----
IMPORTANT : You must have product key, If no then press ^C to exit
-----

Beginning configuration

Performing IP configuration for EPSNG for OVA deployment
please provide below information

Please provide IP address
_____

Please provide subnet mask
_____

Please provide gateway
_____

Please wait while IP configuration is in progress

Please provide DNS IP
j_____

Please wait while we check for internet connectivity
```

3. **Software License Agreement** appears. Read the License Agreement carefully. Installation and usage of Seqrite Endpoint Protection is subject to your formal acceptance of the Seqrite Endpoint Protection end-user license terms and conditions. To continue, hit [Enter] or press R key to read more.
4. **Terms & Conditions** appear. To continue, hit [Enter] or press R key to read more. To continue, type A and hit [Enter] to accept the terms and conditions; D option is to decline. If you decline, the installation process is stopped.

```
I accept the terms and conditions mentioned in the License Agreement.

[A] Accept
[D] Decline

To continue, type A or D and hit [Enter]
A

Privacy Policy

The following statement discloses the privacy policy of Quick Heal
Technologies Ltd. (formerly known as Quick Heal Technologies Pvt. Ltd)
for its website or products. Seqrite is a proprietary trade mark of Quick Heal.
We update our policy periodically without any notice; kindly
visit this page occasionally to stay informed about any changes in the policy.

To continue, hit [Enter] or [R] to Read More

I am giving consent to use my data for Product Activation and further
updates of Seqrite Endpoint Security.I have read and I agree with the
terms of Privacy Policy.

[A] Accept
[D] Decline

To continue, type A or D and hit [Enter]
A

Please wait, configuring the system for user, which may take 5 to 6 minutes.
_
```

5. Wait till the system is configured for user. It might take 5 to 6 minutes.
6. The Proxy Settings screen appears. If you are using a proxy server to connect to the Internet, type 1 and hit enter.

If you want to continue without enabling Proxy Settings, type 2 and hit enter. The Proxy Setting information is used by EPP server for internet connectivity, activation and for downloading updates.

To enable and configure proxy settings:

- a. Type the IP address of the proxy server or domain name (For example, proxy.yourcompany.com) and hit [Enter].
- b. Type the port number of the proxy server (For example: 80) and hit [Enter].
- c. Type 1 to Authenticate to connect through the Proxy server. Type 2 to continue without authentication.
- d. Type User Name.
- e. The success message appears if the connection to the proxy server is successful.

7. The Product Key screen appears. Enter the Product key without the hyphen. The Product Key will be validated. The success message appears.

```
Product Key
Type Product Key with format XXXXXXXXXXXXXXXXXXXXXXXX, WITHOUT - (hyphen) and hit [Enter]
-----

The Product Key has been validated successfully.

Partner Name
Type Full Name of Partner and hit [Enter]
-----
```

8. The Customer Information screen appears. Verify information about the customer step by step. This information is important to activate Seqrite EPP on your machine. If you are a new customer, enter the information step by step.

```
Contact Details

First Name
Type First Name and hit [Enter]
-----

Last Name
Type Last Name and hit [Enter]
-----

Company Name
Type Company Name and hit [Enter]
-----

Administrator Email Address
Type Email Address and hit [Enter]
-----

Mobile Number
Type Mobile Number with country code separated by - and hit [Enter]
-----
```

Note: If you are reactivating using the same key, there are two options:

- a. Type **1** to continue with existing information.

```
customer details provided during activation

Customer First Name : Test
Customer Last Name : ova
Customer Company Name : qh
Admin Email : [REDACTED]
Customer Mobile Number : +
Country : India

[1] Continue with existing customer information
[2] Update customer information

To continue, type 1 or 2 and hit [Enter]
1

First Name
Type first name and hit [Enter] or hit [Enter] to continue with value Test

Last Name
Type last name and hit [Enter] or hit [Enter] to continue with value ova

Company Name
Type company name and hit [Enter] or hit [Enter] to continue with value qh

Administrator Email Address
Type email address and hit [Enter] or hit [Enter] to continue with value [REDACTED]
```

- b. Type **2** to update the information.

Note: The maximum length for the first name is 50 characters.

9. The Authentication screen appears. Create Seqrite Endpoint Protection administrator password to access the Web console and endpoint password to access the endpoint settings at the endpoint side.
 - a. Type in Administrator Email Address and hit [Enter] or you can continue with the existing Email address. To continue, hit [Enter].
 - b. Type in your password and hit [Enter]. Type password again to confirm the password and hit [Enter]. You cannot view the typed password.
 - c. You can provide client credentials. This is optional. Type 1 to specify client credentials and hit [Enter]. Type in client password and hit [Enter]. Type client password again to confirm the password and hit [Enter]. You cannot view the typed password.
 - d. This helps prevent unauthorized users from accessing the Web console and make changes in your settings or remove the endpoints.
 - e. Type 2 to continue without providing client credentials and hit [Enter].
10. The installation summary screen appears. Activation and Server Configuration data is displayed. Please note the EPP console URL.
 - a. Type **1** to save summary file and hit [Enter].

- b. Type **2** to continue without saving and hit [Enter].

```
Summary

Verify the summary of Activation and Server Configuration.
Please note the EPS login URL.

Installation Type      :Single Node Installation
Installation Path      :/opt/Seqrite_EndPoint_Security
Login URL              :
Customer First Name    :ova
Customer Last Name     :test
Customer Company Name  :qh
Customer Mobile Number :+91-8871334400
Country                :India
Domain Name or IP Address :
HTTP Port              :8080
SSL Port               :8443
Client Installation Path :%PROGRAMFILES%\Seqrite\Seqrite
Administrator Email Address:ova1@yopmail.com

[1] Save Summary File
[2] Continue without saving

To continue, type 1 or 2 and hit [Enter] to continue
1

Triggering Preconfig and Tenant On-Boarding
Preconfig and Tenant On-Boarding is successful..!!

Installing Default Linux Client
-
```

11. The installation process starts. Tenant onboarding starts.
12. It prompts you to change the password.

```
After OVA configuration, you must change the epsng user password.

Password
Type Password and hit [Enter] to continue

Confirm Password
Type Confirm Password and hit [Enter] to continue
```

13. After changing the password, you need to log in again.

```
After OVA configuration, you must change the epsng user password.

Password
Type Password and hit [Enter] to continue

Confirm Password
Type Confirm Password and hit [Enter] to continue

The Password has been changed successfully.

Please re-login to apply changes.
To exit, hit [Enter]
```


14. To continue:

- a. Type **Y** to continue using the system and hit [Enter].
- b. Type **N** to log out and hit [Enter].

```
To continue, type 1 or 2 and hit [Enter] to continue
1


Triggering Preconfig and Tenant On-Boarding
Preconfig and Tenant On-Boarding is successful..!!

Installing Default Linux Client
Default Linux Client installed..!

Configuration is now complete and system is ready for use..!!
Console can be accessed by : 

Please Enter Y to continue using the system or N to logout
```

15. If you enter **Y**, the following screen appears.

```
Console can be accessed by : 

1) Restart Services
2) Collect Logs
3) Reboot
X) Exit
Please enter your choice
```

16. Enter your choice and hit [Enter].

Step 3: Log on to EPP Server

1. Paste the console access URL in any browser. Example: `https://<provided IP Address>/login/eps`.

Supported Web Browsers:

- Google Chrome 62, 63, 64 or 65
 - Mozilla Firefox 56, 57, 58, 59, 62, 64 or 65
 - Microsoft Edge.
2. Provide the credentials.

Seqrite Endpoint Protection console is ready to use.

Exiting the Setup

You can exit from the setup process by pressing **Control C** keys.

Confirmation message appears. Again, press Control C keys to exit the setup.