

Seqrite
Endpoint Protection Cloud for Mac

SEQRITE



User Guide

EPP Cloud v5.0

www.seqrite.com

Copyright Information

Copyright © 2018–2024 Quick Heal Technologies Ltd. All Rights Reserved.

No part of this publication may be reproduced, duplicated, or modified in any form or incorporated into any information retrieval system, electronic or any other media or transmitted in any form without prior permission of Quick Heal Technologies Limited, Marvel Edge, Office No.7010 C & D, 7th Floor, Viman Nagar, Pune 411014, Maharashtra, India.

Marketing, distribution or use by anyone barring the people authorized by Quick Heal Technologies Ltd. is liable to legal prosecution.

Trademarks

Seqrite and DNAScan are registered trademarks of Quick Heal Technologies Ltd. Other brands and product titles are trademarks of their respective holders.

License Terms

Installation and usage of Seqrite Endpoint Protection is subject to user's unconditional acceptance of the Seqrite end-user license terms and conditions.

To read the license terms, visit <http://www.seqrite.com/eula> and check the End-User License Agreement for your product.


Document Release Date

12-Aug-24

About the Document

This User Guide covers all the information about how to install and use Seqrite Endpoint Protection in the easiest possible ways. We have ensured that all the details provided in this guide are updated to the latest enhancements of the software.

The following list describes the conventions that we have followed to prepare this document.

Convention	Meaning
Bold Font	Anything highlighted in bold indicates that it is a direction about how to carry out an action.
	This symbol indicates additional information or important information about the topic being discussed.
<Step 1> <Step 2>	The instruction mentioned in the numbered list indicates actions that you need to perform.

Seqrite Endpoint Protection Highlights

Seqrite Endpoint Protection ensures maximum protection against any possible threats or malware that may infect your system when you browse online, work in network environment, and access emails. You can schedule scanning, set rules for Quarantine and Backup for files, and block malicious emails and spams.

Mac Security Helps you customize the settings that concern the protection of files and folders in your system. You can set scanning preferences, apply rules for virus protection, schedule scanning, exclude files and folders from scanning, and set rules for quarantine and backup files.

Web Security Helps you set the protection rules to save your machine from malicious files that can sneak into your system during online activities such as banking, shopping, surfing and so on.

Email Security Helps you customize the protection rules for receiving emails from various sources. You can set rules for blocking emails which are suspicious of spam, or malware.

For more information, please visit <http://www.seqrite.com>.

Contents

Copyright Information	2
About the Document	3
Seqrite Endpoint Protection Highlights.....	4
Chapter 1. Getting Started	8
Prerequisites	8
System Requirements.....	8
Installing Seqrite Endpoint Protection on Mac System	9
Installing Seqrite Endpoint Protection Mac client on macOS Catalina and above	10
Permission required to support macOS Catalina and above	14
Installing Seqrite Endpoint Protection on Mac System Remotely	19
Creating Mac client Installer	19
Installing using Apple Remote Desktop or Casper	19
<i>Prerequisites</i>	19
<i>Installing Mac Client using Apple Remote Desktop or Casper</i>	20
<i>Creating Mac client package</i>	20
<i>Deploying Seqrite Mac Client using Apple Remote Desktop</i>	21
<i>Deploying Seqrite Mac Client using Casper</i>	21
Connecting remotely using Secure Shell.....	22
Using Terminal (for Mac or Linux OS)	22
<i>Prerequisites</i>	22
Installing Seqrite Mac Client.....	22
Using PuTTY (for Windows OS)	23
<i>Prerequisites</i>	23
<i>Installing Seqrite Mac Client</i>	24
Deploying through ManageEngine	26
<i>Prerequisites</i>	26
<i>Steps</i>	26
<i>Deploying Profile</i>	27
<i>Mac Client Deployment with ManageEngine</i>	28
Chapter 2. About Seqrite Endpoint Protection Dashboard.....	31
Seqrite Endpoint Protection Dashboard	31
Seqrite Endpoint Protection Features	32
Seqrite Endpoint Protection Menus	32
Quick Access Options	32

	Help Topics	33
	About Seqrite Endpoint Protection	33
	Updating with definition files	34
Chapter 3.	Seqrite Endpoint Protection Features	35
	Mac Security	35
	Scan Settings	35
	Virus Protection	38
	Schedule Scans	39
	<i>Configuring Schedule Scans</i>	<i>39</i>
	<i>Editing Schedule Scans</i>	<i>40</i>
	<i>Removing Schedule Scans</i>	<i>41</i>
	Exclude Files & Folders	41
	<i>Configuring Exclude Files & Folders</i>	<i>41</i>
	<i>Editing Exclude Files & Folders</i>	<i>42</i>
	<i>Removing Exclude Files & Folders</i>	<i>42</i>
	Quarantine & Backup	42
	<i>Configuring Quarantine & Backup</i>	<i>42</i>
	Web Security	43
	Browsing Protection	43
	<i>Configuring Browsing Protection</i>	<i>44</i>
	Phishing Protection	44
	<i>Configuring Phishing Protection</i>	<i>44</i>
	Email Security	44
	Email Protection	44
	<i>Configuring Email Protection</i>	<i>44</i>
	Spam Protection	45
	<i>Configuring Spam Protection</i>	<i>45</i>
Chapter 4.	Scanning Options	48
	Scan My Mac	48
	Custom Scan	48
Chapter 5.	Seqrite Endpoint Protection Menus	49
	Reports	49
	Viewing Reports	49
	Settings	49
	Automatic Update	50
	<i>Configuring Automatic Update</i>	<i>50</i>
	Self Protection	51
	<i>Configuring Self Protection</i>	<i>51</i>
	Password Protection	51
	<i>Configuring Password Protection</i>	<i>51</i>
	Device Control	51
	<i>Configuring Device Control on Mac Client</i>	<i>53</i>

	Data Loss Prevention (DLP)	55
	Proxy Support	55
	<i>Configuring Proxy Support</i>	55
	Report Settings	55
	<i>Configuring Report Settings</i>	56
Chapter 6.	Updating Software & Cleaning Viruses	57
	Updating Seqrite Endpoint Protection from Internet.....	57
	Updating Seqrite Endpoint Protection with definition files.....	57
	Update Guidelines for Network Environment.....	58
	Cleaning Viruses	58
	<i>Cleaning viruses encountered during scanning</i>	59
	<i>Scanning Options</i>	59
Chapter 7.	Technical Support.....	60
	<i>Other Sources of Support</i>	60
	Head Office Contact Details.....	60

Chapter 1. Getting Started

Seqrite Endpoint Protection is simple to install and easy to use. During installation, read each installation screen carefully and follow the instructions.

Prerequisites

Remember the following guidelines before installing Seqrite Endpoint Protection on your Mac machine:

- A system with multiple anti-virus software programs installed may result in system malfunction. If any other anti-virus software program is installed on your system, you need to remove it before proceeding with the installation of Seqrite Endpoint Protection .
- Close all open programs before proceeding with installation.
- We recommend you to keep a backup of your data in case your system is infected with viruses.
- Seqrite Endpoint Protection must be installed with administrative rights.

System Requirements

To use Seqrite Endpoint Protection , your system should meet the following minimum requirements:

- Mac OS X 10.12, 10.13, 10.14, 10.15, 11, 12, 13 and 14
- Mac devices with Intel Processor or Apple M1, M2, M3 chip
- Minimum 512 MB of RAM, 2 GB or more is recommended
- 1200 MB free hard disk space

The requirements provided are minimum system requirements. We recommend that your system should have higher configuration to obtain best results.

To check for the latest system requirements, visit: <http://www.seqrite.com>.

Clients that support email scan

The POP3 email clients that support the email scanning feature are as follows:

- Apple Mail Ver. 10.3 and later
- Thunder bird
- Sparrow
- Sea Monkey
- MailSmith

Clients that do not support email scan

The POP3 email clients and network protocols that do not support the email scanning feature are as follows:

- IMAP
- AOL
- POP3s with Secure Sockets Layer (SSL)
- Web based email such as Hotmail and Yahoo! Mail
- Lotus Notes

SSL connections not supported

Email Protection does not support encrypted email connections that use Secure Sockets Layer (SSL). If SSL connections are being used, the emails are not protected by Email Protection.

Installing Seqrite Endpoint Protection on Mac System

Before you install Mac client, create Mac Client installer on the Endpoint Server in the following way.

To create a Mac Seqrite Client installer, follow these steps:

- 1 Log on to the Seqrite Endpoint Protection Cloud.
- 2 Go to Deployment.
- 3 Click the **Create Installer** button to create the Client Installer.
The Create Client Installer dialog opens.
- 4 Enter **Installer Name** and select **Group**.
- 5 In the **OS platform** list, select Mac.
- 6 A default Validity period of 30 days is selected. You can change it to 60 or 90 days if required.
- 7 A default folder path to install is displayed. Make note of it.
- 8 Click **Create**. The <Installer Name>.TAR file is created.

The installer without antivirus setup is created and appears in the list on Deployment > Client Installer page. You can download this installer.

Note

With Standalone Installer, you can create Mac client installer with antivirus setup.

Email Install Link

Email Install link allows you to send an email notification to the endpoints in the network to install the Seqrite Endpoint Protection client.

To notify clients to install the Seqrite Mac client, follow these steps:

1 Log on to the Seqrite Endpoint Protection Cloud.

2 Select Deployment > Email Install link.

The Email Install link screen appears.

3 In the To field, type the email address.

In case of multiple recipients insert a semi colon (;) between email addresses.

You may modify the subject line of the message if required.

4 Click Send Email.

A Notify Install message containing a link for the installer file is sent from the administrator before installing Seqrite Endpoint Protection .

5 To install Seqrite EPP Client on a Mac system, type the installer link in the browser.

The link is sent to you to your email address.

A web page appears that displays the prerequisites for the installation and includes a link to the installer file ([Download Mac Client](#)). Read the prerequisites carefully.

6 Click the Download Mac Client link.

A tar file is downloaded that includes the installer.

7 Go to the location where you have saved the tar file and extract all its components.

8 Double-click the installer file ([MCLAGNT.DMG](#)).

9 Run the Installer to start the Seqrite Endpoint Protection installation.

Note:

-
- Device Control, Data Loss Prevention depend upon Virus Protection.
 - Phishing Protection, Browsing Protection, and Web Security may create multiple reports for a single instance if restricted URL is run on Opera browser.
 - Notification for Remote Scan, Remote Update, and Remote Un-install from Seqrite EPP web console cannot be sent if Mac client user is not logged on to the Mac machine.
-

Installing Seqrite Endpoint Protection Mac client on macOS Catalina and above

macOS Catalina and above versions requires approval from the users to run the Installer for Endpoint Protection for Mac, when tar file is extracted on Desktop/Downloads folder.

1 While installing EPP Cloud Mac client, a prompt appears to ask permission to access Desktop/Downloads/Documents folder where MCLAGNT.TAR file is extracted.

2 To continue installation, click **OK**.

- For Users having macOS Catalina, the following system extension prompts will appear one by one when the installation starts. Click **Open Security Preferences** on all the prompts.



Self-protection (ggcext) prompt



Online protection (Opsect) prompt



Data Loss Prevention (dlpext) prompt



File Activity Monitor (famext) prompt

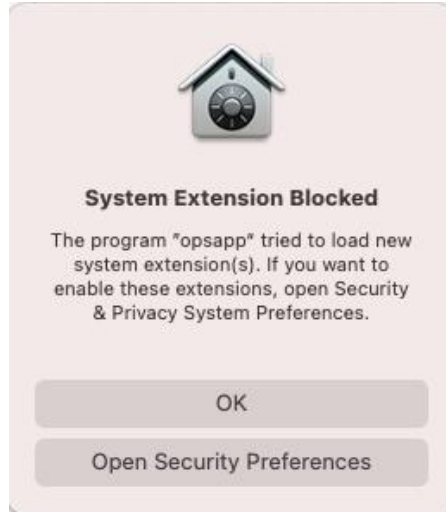


Web Security (webflt) prompt

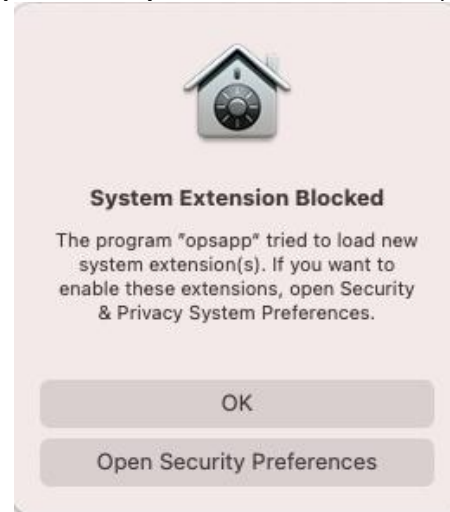


Email Security (mailflt) prompt

- For Users having macOS Big Sur and above, the following prompts will appear one by one when the installations starts. Click **Open Security Preferences** on all the prompts.



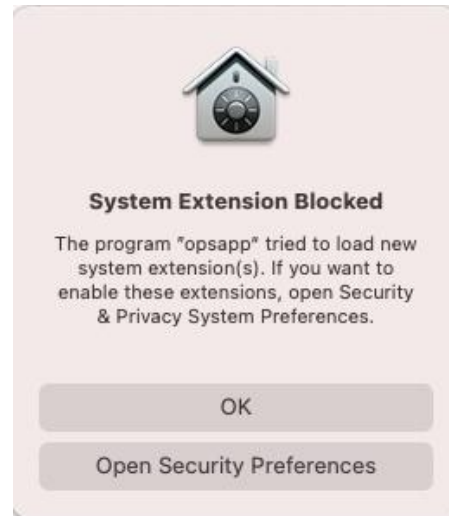
Self-protection (ggcext) prompt



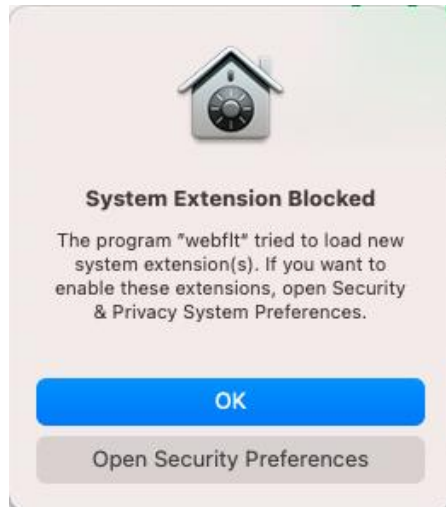
Online protection (Opsext) prompt



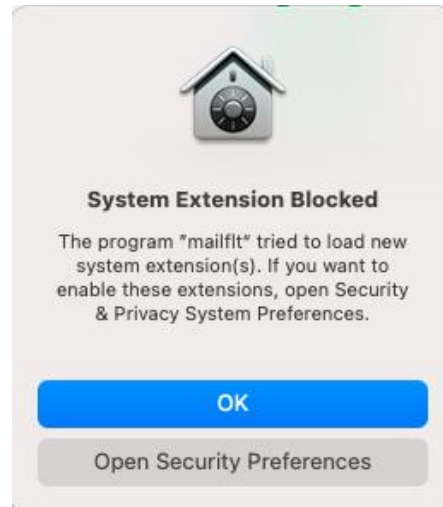
Data Loss Prevention(dlpext) prompt



File Activity Monitor (famext) prompt

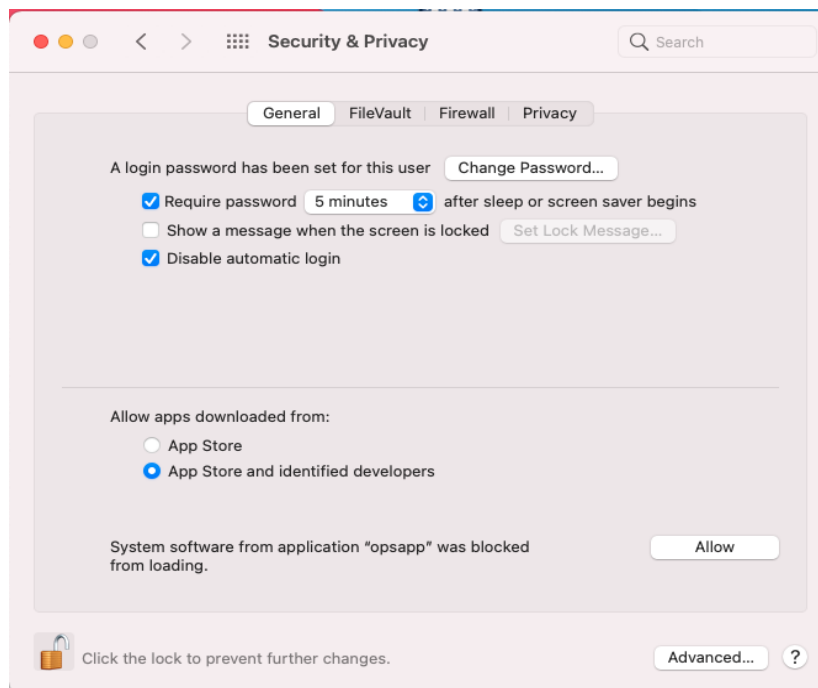


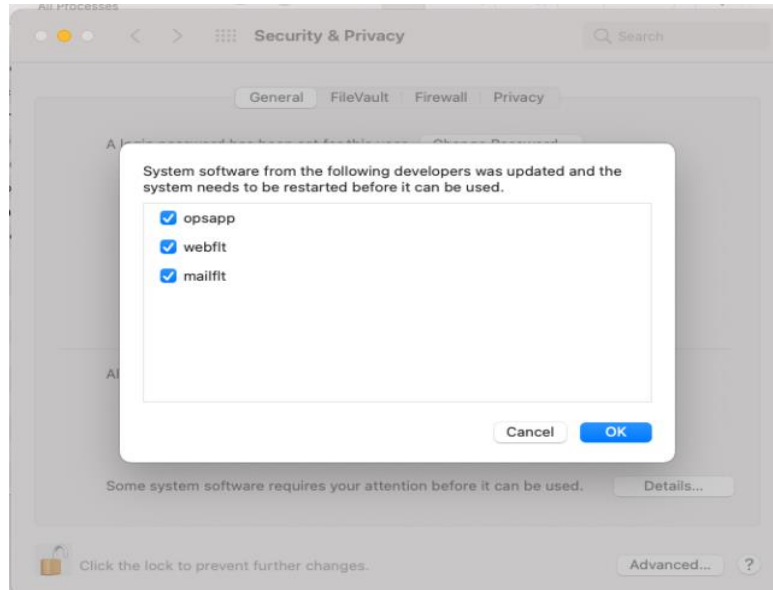
Web Security (webflt) prompt



Email Security (mailflt) prompt

- 3 User needs to ALLOW all the above shown system extension prompts to ensure the following settings on macOS Catalina and above.
 - i. Go to **System Preferences > Security & Privacy**.
 - ii. Click the lock icon and provide the password if it is locked.
 - iii. Click the **Allow** button as shown in the following screenshot.





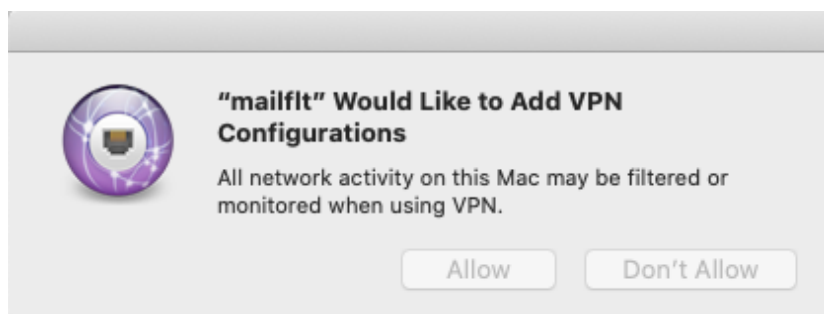
Note: On macOS Catalina "Placeholder Developer" is shown instead of the corresponding app name. Issue is acknowledged by Apple and according to Apple, will be solved in Big Sur. <https://developer.apple.com/forums/thread/130056>

- iv. The list of updated system software appears. Click **Ok**.
- v. Restart your computer.

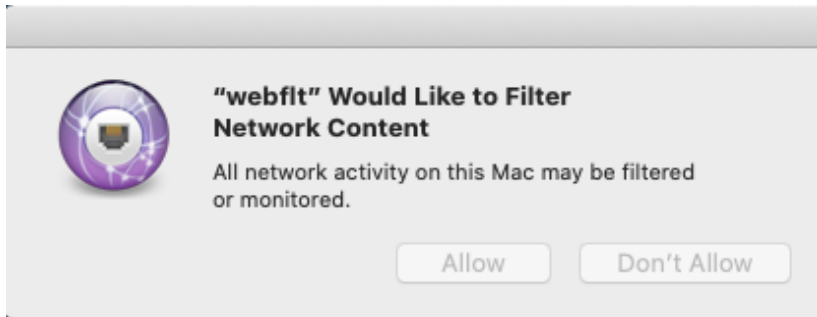
Permission required to support macOS Catalina and above

Product's [Seqrite] & Services would require permission to access system files on macOS Catalina and above. After Allowing all Apps and Services, system restart is required.

- 1 Post successful installation of Seqrite Endpoint Protection, the following prompts appear.
 - For Users having macOS Catalina, the following prompts will appear. Click **Allow** on all the prompts.



Email Security VPN configurations

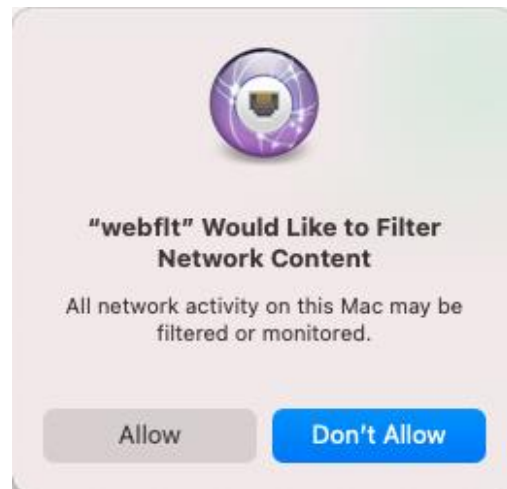


Web Security Network content

- For Users having macOS Big Sur and above, the following prompts will appear. Click **Allow** on all the prompts.

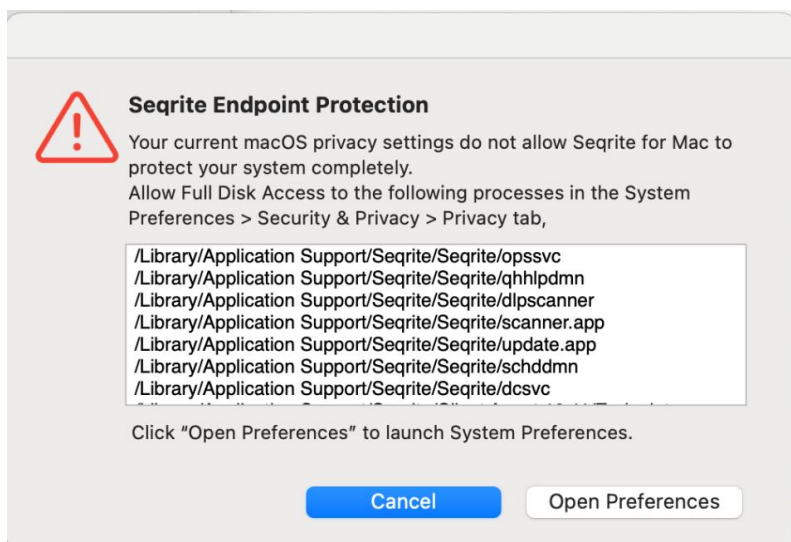


Email Security VPN configurations



Web Security Network content

- Avprompt prompt message will appear as shown below.

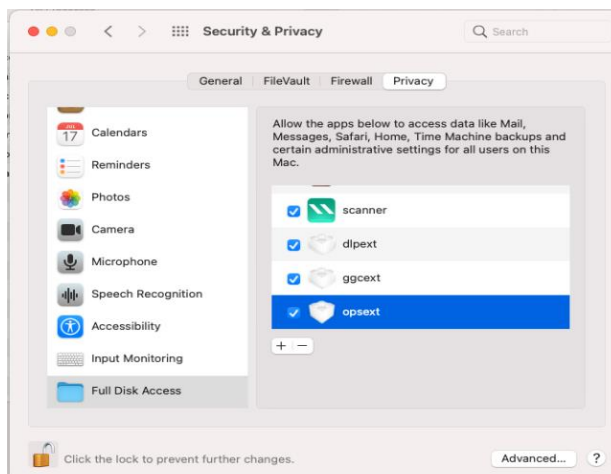


AVprompt

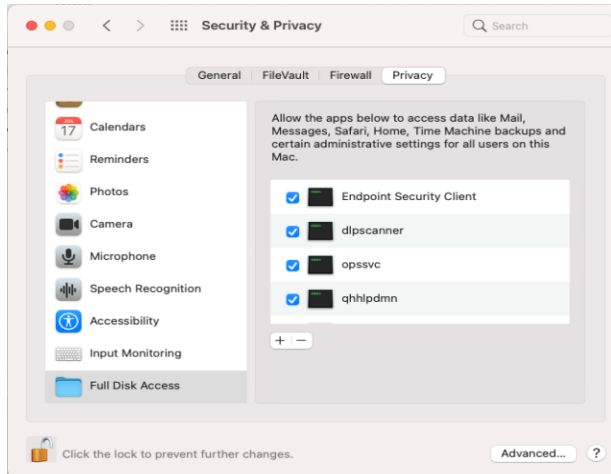
- 3 Do the following settings on macOS.
 - i. Open **System Preferences**.
 - ii. Go to **Security & Privacy > Privacy** tab.
 - iii. Click the lock icon and provide the password if it is locked.
 - iv. Select **Full Disk Access** in the left pane.

- 4 Add the following processes in the given path and then select the processes in the Security & Privacy Full Disk Access window,
 - /Library/Application Support/Seqrite/ Seqrite/opssvc
 - /Library/Application Support/Seqrite/ Seqrite/qhhlpdmn
 - /Library/Application Support/Seqrite/ Seqrite/dlpscanner
 - /Library/Application Support/Seqrite/ Seqrite/scanner.app
 - /Library/Application Support/Seqrite/ Seqrite/update.app
 - /Library/Application Support/Seqrite/ Client Agent 10.12/Endpoint Protection Client
 - /Library/Application Support/Seqrite/Seqrite/schddmn
 - opsext (already present in the privacy section)
 - ggcext (already present in the privacy section)
 - Dlpext (already present in the privacy section)
 - famext (already present in the privacy section)
 - /Library/Application Support/Seqrite/Seqrite/dcsvc (applicable only to macOS Big Sur and above)

- 5 The above processes may be added automatically. In this case, only select the processes in the Security & Privacy > Full Disk Access window.

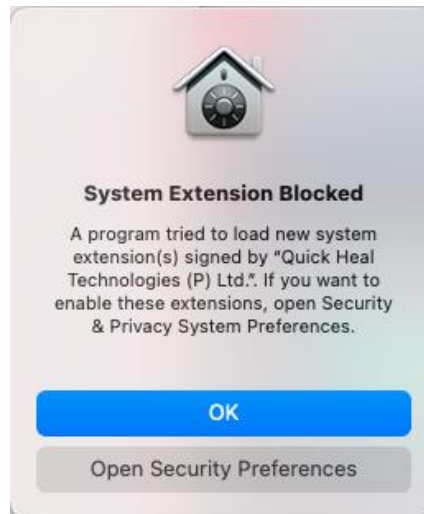


The following screenshot will appear showing **Full Disk Access configuration** in System Preferences.



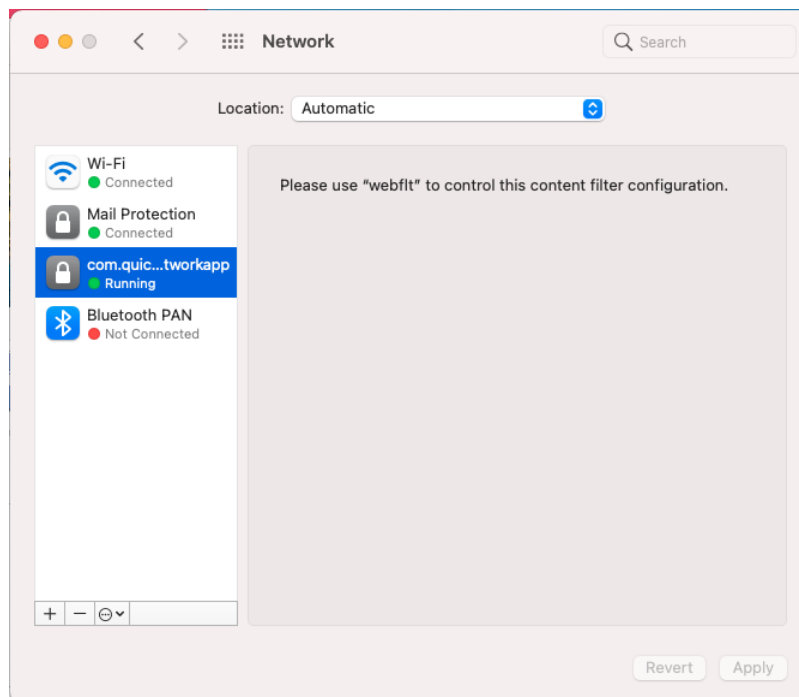
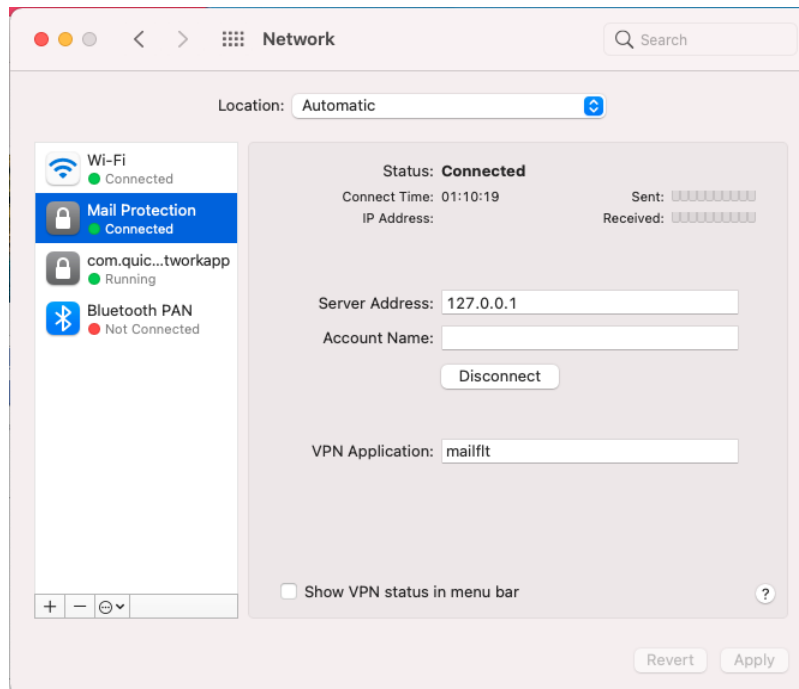
Full Disk Access

If you install Seqrite Endpoint Protection Mac client on macOS Catalina for the first time, the following alert prompt appears,



Note: The above prompt does not appear on macOS Big Sur and above (Intel and Apple's ARM64) system.

- 6 To function Seqrite EPP Mac client on macOS Catalina and later, do the following.
 - i. Click Open Security Preferences.
 - ii. Allow "Quick Heal Technologies (P) Ltd." from the 'System Preferences >> Security & Privacy'.
- 7 The following screenshot displays mailflt & webflt network extensions connected state in System preferences > Network



Note: Once all the System extensions are allowed and the required permissions are given, then restart your computer.

Please note:

- Device Control, Data Loss Prevention, and File Activity Monitor depend upon Virus Protection.

- Phishing Protection, Browsing Protection, and Web Security may create multiple reports for a single instance if restricted URL is run on Opera browser.
- Notification for Remote Scan, Remote Update, and Remote Un-install from Seqrite EPP web console cannot be sent if Mac client user is not logged on to the Mac machine.

Installing Seqrite Endpoint Protection on Mac System Remotely

You can install Seqrite Mac Client in one of the following ways.

- [Installing using Apple Remote Desktop or Casper](#)
- [Connecting remotely using Secure Shell](#)
 - [Using Terminal \(for Mac and Linux OS\)](#)
 - [Using PuTTY \(for Windows OS\)](#)
- [Deploying through ManageEngine](#)

Creating Mac client Installer

To create Mac client installer, follow these steps:

- 1 Log on to the Seqrite Endpoint Protection Cloud.
- 2 Go to Deployment, click **Create Installer** button.

The Create Client Installer dialog opens.

- 3 Enter Package Name and select Group.
- 4 In the OS platform list, select Mac.
- 5 Select validity period in the list box. The validity period can be of 30, 60 or 90 days.
- 6 Click Create.

The <Package Name>.TAR file is created.

The installer without antivirus setup is created and appears in the list on Deployment > Client Installer page. You can download this installer.

Note

With Standalone Installer, you can create Mac client installer with antivirus setup.

Installing using Apple Remote Desktop or Casper

Apple Remote Desktop (ARD) helps you to connect to the Mac client computers remotely in the network, send software to them, install software on them, help other end users in real time, and perform various tasks.

Prerequisites

Before you install Seqrite Mac Client, ensure the following requirements.

- The administrator computer with ARD or Casper installed must have Mac OS 10.12 and later.
- Mac Seqrite Client installer must be created on Seqrite Endpoint Protection Cloud. To know about how to create client installer, see [Creating Mac Client Installer](#).
- Administrator must have an account on the Mac client computers with admin privileges.
- Enable Remote Management on the Mac client computers.
- Your administrator computer must have Packages installed on it. Packages is a Mac OS application that helps you to create bundle for your payload and installation. To download Packages, visit <http://s.sudre.free.fr/Software/Packages/about.html>.
- For macOS Catalina and above only, do the following on your Mac system,
 - 1 Open System Preferences.
 - 2 Go to **Security & Privacy > Privacy** tab.
 - 3 Click the **lock** icon and provide password if it is locked.
 - 4 Select **Full Disk Access** in the left pane.
 - 5 Add the following process in the given path and then select the processes in the **Security & Privacy Full Disk Access** window,


```
/Library/PrivilegedHelperTools/fr.whitebox.packages/packages_dispatcher
```

Installing Mac Client using Apple Remote Desktop or Casper

This procedure helps you install Mac client on the remote Mac client computers using ARD or Casper. For more details, you may refer the documentation of the respective software applications.

Creating Mac client package

- 1 On the Seqrite Endpoint Protection Cloud, download [UEMREMOTEINST.TAR](#) from the URL,

[/Library/Application Support/Seqrite/Seqrite/dcsvc \(applicable only to macOS Big Sur and above\)](#)
- 2 Download Mac client builds from the EPP Cloud server. These builds will be in TAR format.
- 3 Rename the Mac client installer as follows:
 - Mac client installer - MCCLAGNT.TAR
- 4 Extract [UEMREMOTEINST.TAR](#).
- 5 Copy [MCCLAGNT.TAR](#) to "<Download directory>/UEMREMOTEINST".
- 6 Open Terminal.app on the administrator Mac computer and go to the UEMREMOTEINST folder.
- 7 Enter the following commands

```
cd ./Remote_Installation/PKG
sudo sh ./ClientAgentInstaller/CreatePackage.sh
```

Administrator rights are required for executing this command.

When the package creation completes successfully, `ClientAgentInstaller.pkg` file is created in the `./Remote_Installation/PKG/ClientAgentInstaller/` folder.

If the Client Packager is failed to create on macOS Catalina and above, do the following

- 1 Open System Preferences.
- 2 Go to **Security & Privacy > Privacy** tab.
- 3 Click the **lock** icon and provide password if it is locked.
- 4 Select **Full Disk Access** in the left pane.
- 5 Select the **packages_dispatcher** check box.
- 6 Now again try to create Client Packager, it will be created successfully.

Deploying Seqrite Mac Client using Apple Remote Desktop

In addition to the [Prerequisites](#) described in the preceding section, follow this prerequisite.

Prerequisite

Before deploying Seqrite Mac client, ensure that you get Apple Remote Desktop (ARD) tool installed on your administrator computer. To download ARD, visit <https://www.apple.com/in/remotedesktop>.

To deploy Seqrite Mac client using Apple Remote Desktop, follow these steps:

- 1 Open Apple Remote Desktop.
- 2 Select the Mac client computers from the list of all available computers and then click *Install* to add the package.
- 3 Click the plus (+) sign to locate and add `ClientAgentInstaller.pkg` and then click *Install* to begin deployment.

Deploying Seqrite Mac Client using Casper

In addition to the [Prerequisites](#) described in the preceding section, follow this prerequisite.

Prerequisite

Before deploying Seqrite Mac client, ensure that you get Casper tool installed on your administrator computer. Casper helps to install software and run scripts remotely on the client computers. To download Casper, visit <http://www.jamfsoftware.com/products/casper-suite/>.

To deploy Seqrite Mac client using Casper, follow these steps:

- 1 Log on to Casper Admin.
- 2 Drag `ClientAgentInstaller.pkg` to the window and then select File > Save.
- 3 Log on to Casper Remote.
- 4 In the Computers tab, select the Mac client computers from the list of available computers.

- 5 In the Packages tab, select [ClientAgentInstaller.pkg](#).
- 6 Click Go.

Connecting remotely using Secure Shell

Secure Shell (SSH) is a network protocol that is used to connect to the remote Mac client computers over secure data communication through command line to manage client computers.

Using Terminal (for Mac or Linux OS)

The administrator computer having either Mac or Linux OS can install client using this method.

Prerequisites

Before you install Seqrite Mac client, ensure the following requirements.

- Administrator must have an account on the Mac client computers with admin privileges.
- Enable Remote Login and either allow access for all users, or only for specific users, such as Administrators. You can find this setting on the Mac computer under System Preferences > Sharing > Remote Login.
- Ensure that the firewall does not block the port that Secure Shell (SSH) uses, which is by default TCP port 22. This port allows the required communication for remote login.
- If you use the Mac firewall, disable stealth mode. With stealth mode enabled, the remote push installation cannot discover the client through Search Network.
- To disable stealth mode on the Mac computers, do the following,
 - 1 In System Preferences, go to **Security and Privacy**.
 - 2 Click the **Lock** icon and provide password if it is locked.
 - 3 Select **Firewall > Firewall Options**.
 - 4 Clear the **Enable stealth mode** check box if it is selected.
 - 5 Click **OK**.
- Mac Seqrite client installer must be created on the EPP Cloud. To know about how to create client installer, see [Creating Mac Client Installer](#).

Installing Seqrite Mac Client

To install Seqrite Mac client using Terminal, follow these steps on the administrator Mac computer:

On the Seqrite Endpoint Protection Cloud, download [UEMREMOTEINST.TAR](#) from the URL, <http://dlupdate.quickheal.com/builds/seqrite/uemcp/en/UEMREMOTEINST.tar>

- 1 Download Mac client builds from the EPP Cloud server. These builds will be in TAR format.
- 2 Rename the Mac client installer as follows:

Mac client installer - MCCLAGNT.TAR

- 3 Extract UEMREMOTEINST.TAR.
- 4 Copy [MCCLAGNT.TAR](#) to "< Download directory>/UEMREMOTEINST". Download directory is the directory where you have downloaded and extracted UEMREMOTEINST.TAR.
- 5 Open Terminal.app and go to the Remote Installation folder.
- 6 Enter the following command

```
sh ./Scripts/copy.sh <username> <ip_address>
```

Parameter description

[sh ./Scripts/copy.sh](#) is static.

[<username>](#) specifies the user name of the remote Mac computer such as 'test'.

[<ip_address>](#) specifies the IP address of the remote Mac computer such as '10.10.0.0'.

Example: [sh ./Scripts/copy.sh "test" "10.10.0.0"](#)

- 7 Enter the password of the remote computer to connect to it.
- 8 Enter the command `sudo sh /tmp/install.sh`.
- 9 Enter the password of the remote computer when prompted.
- 10 A confirmation message appears - "If earlier version of Seqrite Endpoint Protection client is found on the system, then it will be uninstalled automatically. Do you want to continue?? [Yes/No]:".
- 11 Enter **Yes** or **No**.
 - If you enter **Yes**, installation will proceed.
 - If you enter **No**, installation will be aborted with message "Option No has been selected. Installation aborted."
- 12 Enter the command `exit` to close remote SSH session.
- 13 Repeat steps 6 through 10 to install Seqrite Mac client on a different remote computer.

Using PuTTY (for Windows OS)

The administrator computer having Windows OS can install Client Agent using this method.

Prerequisites

Before you install Seqrite Mac client, ensure the following requirements.

- Administrator must have an account on the Mac client computers with admin privileges.

- Enable Remote Login and either allow access for all users, or only for specific users, such as Administrators. You can find this setting on the Mac client computer under System Preferences > Sharing > Remote Login.
- Ensure that the firewall does not block the port that Secure Shell (SSH) uses, which is by default TCP port 22. This port allows the required communication for remote login.
- If you use the Mac firewall, disable stealth mode. With stealth mode enabled, the remote push installation cannot discover the client through Search Network.
- To disable stealth mode on the Mac computers, do the following,
 - 1 In System Preferences, go to **Security and Privacy**.
 - 2 Click the **Lock** icon and provide password if it is locked.
 - 3 Select **Firewall > Firewall Options**.
 - 4 Clear the **Enable stealth mode** check box if it is selected.
 - 5 Click **OK**.
- Mac Seqrite client installer must be created on the Seqrite Endpoint Protection Cloud. To know about how to create client installer, see [Creating Mac Client Installer](#).
- If you are using macOS Catalina (10.15) and installing Endpoint Protection Cloud for Mac, do the following,

To proceed with installation, macOS Catalina requires your approval to access directory where MCCLAGNT.TAR file is extracted (Example: Desktop or Downloads or Documents folder). In the System Preferences > Security & Privacy > Privacy > Files and Folders window, select all the options under accainst to access the directory.

Installing Seqrite Mac Client

To install Seqrite Mac client using PuTTY, follow these steps:

On the Seqrite Endpoint Protection CloudDE , download [UEMREMOTEINST.TAR](#) from the URL, <http://dlupdate.quickheal.com/builds/seqrite/uemcp/en/UEMREMOTEINST.tar>

- 1 Download Mac client builds from the EPP Cloud server. These builds will be in TAR format.
- 2 Rename the Mac client installer as follows:

Mac client installer - MCCLAGNT.TAR
- 3 Extract UEMREMOTEINST.TAR.
- 4 Copy [MCCLAGNT.TAR](#) to "<Download directory>/UEMREMOTEINST". Download directory is the directory where you have downloaded and extracted UEMREMOTEINST.TAR.
- 5 Open [cmd.exe](#) and go to the folder "< Download directory>/UEMREMOTEINST".
- 6 Do the following:
 - Enter the following command if antivirus is not included in the client packager


```
.\Remote_Installation\Softwares\pscp.exe .\MCCLAGNT.TAR .\Remote_Installation\Scripts\install.sh <username>@<ip_address>:/tmp/
```

Parameter description

<username> specifies the user name of the remote Mac client computer such as 'test'.

<ip_address> specifies the IP address of the remote Mac client computer such as '10.10.0.0'.

Example: `.\Remote_Installation\Softwares\pscpc.exe .\MCCLAGNT.TAR .\Remote_Installation\Scripts\install.sh test@10.10.0.0:/tmp/`.

- 7 Open `.\Remote_Installation\Softwares\putty.exe`.
- 8 Enter the IP address of the remote Mac client computer and click *Open*.
- 9 In the PuTTY terminal Window, enter the user name and password of an administrator user on the remote computer.
- 10 Upon getting connected to the remote computer, type the following command `sudo sh /tmp/install.sh`.
- 11 A confirmation message appears - "If earlier version of Seqrite Endpoint Protection client is found on the system, then it will be uninstalled automatically. Do you want to continue?? [Yes/No]:".
- 12 Enter **Yes** or **No**.
 - If you enter **Yes**, installation will proceed.
 - If you enter **No**, installation will be aborted with message "Option No has been selected. Installation aborted."
- 13 Type the command `exit` to close SSH connection.
- 14 Repeat steps 6 through 11 to install on a different Mac client computer.

Note

While installing the Mac client for the first time on Mac OS 10.13, user should allow permission for loading the drivers manually when prompted.

Deploying through ManageEngine

Following are the steps to deploy Endpoint Protection clients using ManageEngine.

Prerequisites

- Administrator must have an account on the Mac client computers with admin privileges.
- Enable Remote Management on the Mac client computers.
- Your administrator computer must have packages installed on it. Packages is a Mac OS application that helps you to create bundle for your payload and installation. To download packages, visit <http://s.sudre.free.fr/Software/Packages/about.html>.
- ManageEngine Agent should be installed on Mac device.
- Mac device should be enrolled with ManageEngine.
- For macOS Catalina and above only, do the following on your Mac system:

- 1 Open **System Preferences**.
- 2 Go to **Security & Privacy > Privacy** tab.
- 3 Click the lock icon and provide password if it is locked.
- 4 Select **Full Disk Access** in the left pane.

Add the following process in the given path and then select the processes in the Security & Privacy Full Disk Access window,

`/Library/PrivilegedHelperTools/fr.whitebox.packages/packages_dispatcher`

Steps

Follow these steps to create the Mac client package:

1. On the Seqrite Endpoint Protection, download UEMREMOTEINST.TAR from the URL.
Note: This tar file is common for EPP Cloud and NG Mac clients. It contains files which are required for creating Mac client packager.
<http://dlupdate.quickheal.com/builds/seqrite/uemcp/en/UEMREMOTEINST.tar>
2. Download Mac client installer from the EPP server. These builds will be in the TAR format.
3. Rename the Mac client installer as follows:
 - Mac client installer - MCCLAGNT.TAR
4. Extract UEMREMOTEINST.TAR.
5. Copy MCCLAGNT.TAR to /UEMREMOTEINST.

6. Open Terminal.app with user having administrative privileges on the Mac computer and go to the UEMREMOTEINST folder.

Enter the following commands:

- `cd ./Remote_Installation/PKG`
- `sudo sh ./ClientAgentInstaller/CreatePackage.sh`

When the package creation is completed successfully, `ClientAgentInstaller.pkg` file is created in the `./Remote_Installation/PKG/ClientAgentInstaller/` folder.

Note: Use this `ClientAgentInstaller.pkg` for Mac client deployment using ManageEngine Endpoint Central.

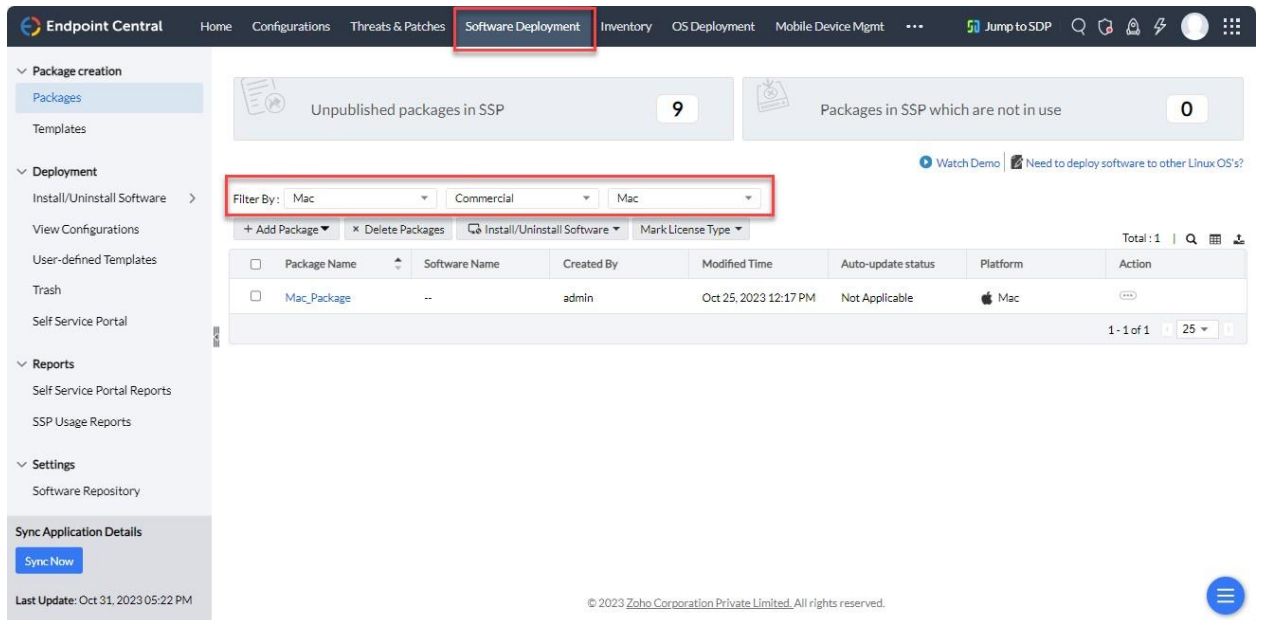
Deploying Profile

Follow these steps to deploy profile with ManageEngine to load product extensions silently and to provide full disk access:

1. Log in to the Manage Endpoint Central Console.
2. Go to **Configuration** and select **Mac**.
3. Select **Custom Configuration**.
4. Enter custom configuration name.
5. Download the profile from <http://download.quickheal.com/builds/seqrite/50/en/build/SeqriteMacProfile.zip>
Extract the downloaded `SeqriteMacProfile.zip`, it will contain **SeqriteMacProfile10.12.mobileconfig**
6. Click **Browse**. The downloaded **SeqriteMacProfile10.12.mobileconfig** into the **Custom Configuration profile**.
Note: This profile will work on macOS Big Sur and onwards systems.
7. Define Target:
 - a. Remote Office/Domain: Select the domain name.
 - b. Filter Computer based on: Computer - Select Mac Computer name. (You can find Mac Computer name at > click ellipse> Click 'Agent' > Click 'Mac' chart from OS Platform.)
8. Click **Deploy** Immediately.

Mac Client Deployment with ManageEngine

1. Log in to the Manage Endpoint Central Console.
2. Go to Software Deployment.



Endpoint Central Home Configurations Threats & Patches **Software Deployment** Inventory OS Deployment Mobile Device Mgmt ... Jump to SDP

Package creation
Packages
Templates

Deployment
Install/Uninstall Software >
View Configurations
User-defined Templates
Trash
Self Service Portal

Reports
Self Service Portal Reports
SSP Usage Reports

Settings
Software Repository

Sync Application Details
Sync Now
Last Update: Oct 31, 2023 05:22 PM

Unpublished packages in SSP 9

Packages in SSP which are not in use 0

Watch Demo Need to deploy software to other Linux OS's?

Filter By: Mac Commercial Mac

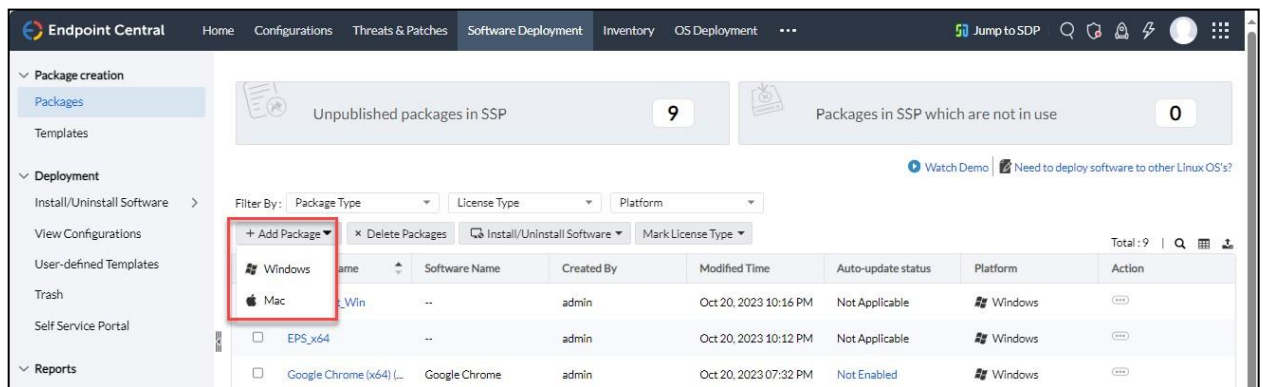
+ Add Package x Delete Packages Install/Uninstall Software Mark License Type

Package Name	Software Name	Created By	Modified Time	Auto-update status	Platform	Action
Mac_Package	--	admin	Oct 25, 2023 12:17 PM	Not Applicable	Mac	...

Total: 1 | 25

© 2023 Zoho Corporation Private Limited. All rights reserved.

3. Click Add Package. Select Mac from the drop-down values.



Endpoint Central Home Configurations Threats & Patches **Software Deployment** Inventory OS Deployment ... Jump to SDP

Package creation
Packages
Templates

Deployment
Install/Uninstall Software >
View Configurations
User-defined Templates
Trash
Self Service Portal

Reports

Unpublished packages in SSP 9

Packages in SSP which are not in use 0

Watch Demo Need to deploy software to other Linux OS's?

Filter By: Package Type License Type Platform

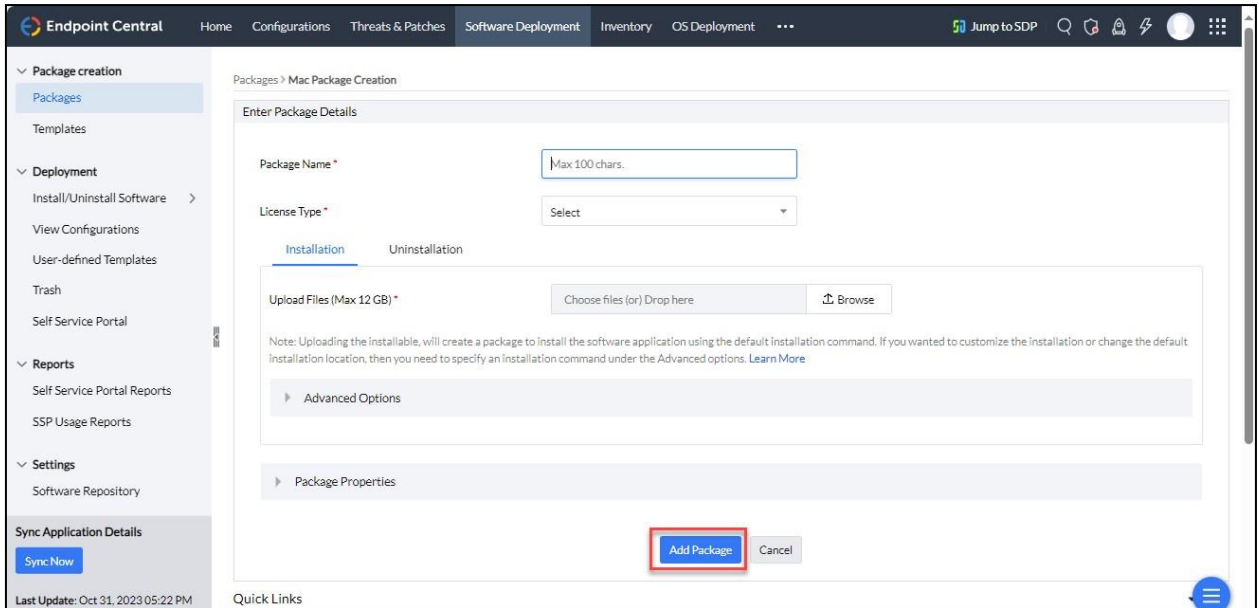
+ Add Package x Delete Packages Install/Uninstall Software Mark License Type

Package Name	Software Name	Created By	Modified Time	Auto-update status	Platform	Action
Windows	--	admin	Oct 20, 2023 10:16 PM	Not Applicable	Windows	...
Mac	--	admin	Oct 20, 2023 10:12 PM	Not Applicable	Windows	...
EPS_x64	--	admin	Oct 20, 2023 10:12 PM	Not Applicable	Windows	...
Google Chrome (x64) (...)	Google Chrome	admin	Oct 20, 2023 07:32 PM	Not Enabled	Windows	...

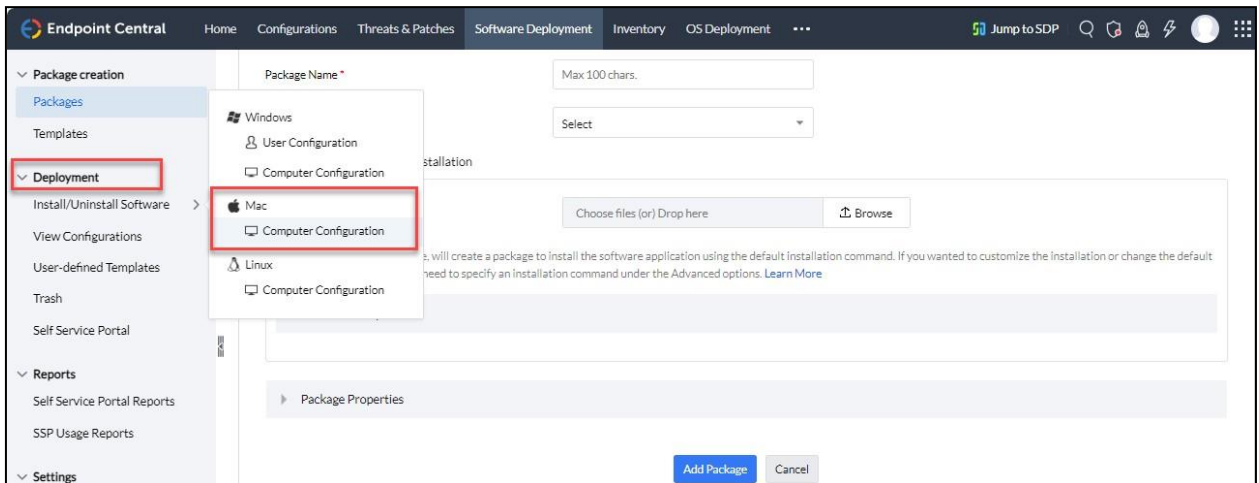
Total: 9 | 25

© 2023 Zoho Corporation Private Limited. All rights reserved.

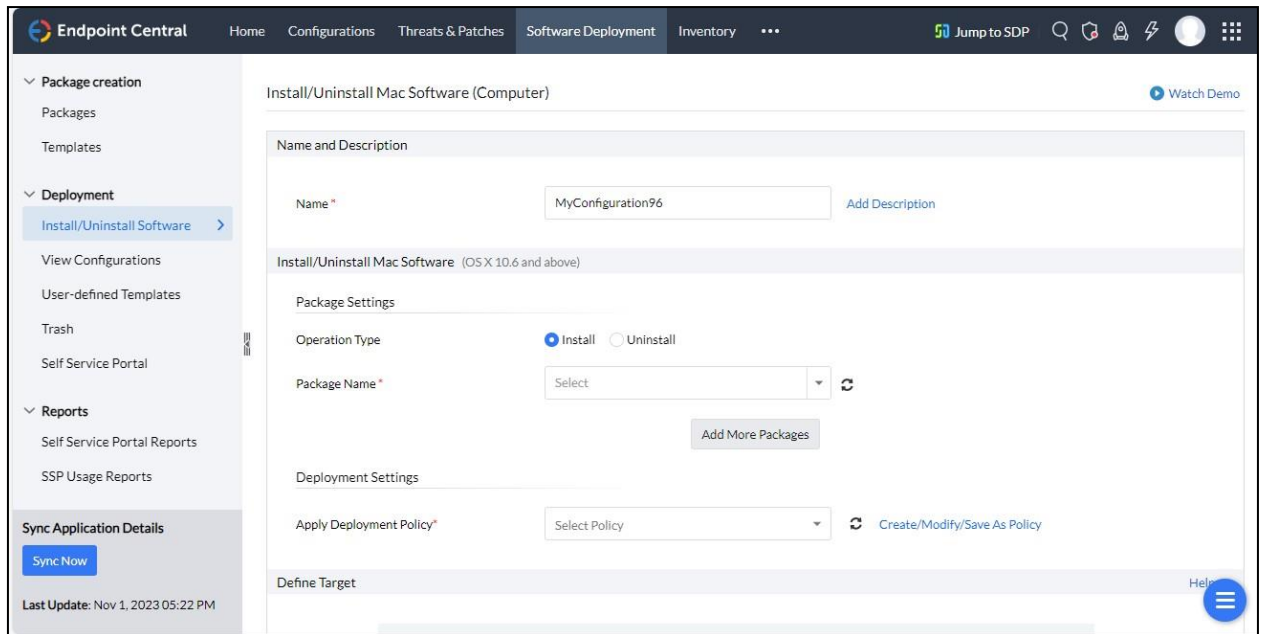
4. Enter the Package Name.



5. Select **Commercial** from the **License Type** drop-down values.
6. Click **Browse** to upload the Mac packager that is, **ClientAgentInstaller.pkg**.
7. Click **Add Package**. The packager gets added.
8. Now, in the left pane, go to **Deployment > Install/Uninstall Software > Mac > Computer Configuration**.



9. Give an appropriate name for configuration.



10. Select Operation Type: **Install**.

11. Select the package name that you entered earlier from the Package Name drop-down list values.

12. Select **Deploy any time at the earliest** from Apply Deployment Policy drop-down list values.

13. Define Target:

- a. Remote Office/Domain: Select the domain name.
- b. Filter Computer based on: Computer - Select Mac Computer name. (You can find Mac Computer name at > click ellipse> Click 'Agent' > Click 'Mac' chart from OS Platform.)

14. Click Deploy Immediately.

Chapter 2. About Seqrite Endpoint Protection Dashboard

You can access Seqrite Endpoint Protection from the desktop in any of the following ways:

- Click the Seqrite icon in the menu bar and then select Open Seqrite Endpoint Protection .
- Click the Seqrite Endpoint Protection icon in Dock, if you have added Seqrite Endpoint Protection to the Dock tray.
- In the Doc tray, click Finder and then select Applications under FAVORITES. Click Seqrite Endpoint Protection in the Applications pane to open the application.

Seqrite Endpoint Protection Dashboard

When you open Seqrite Endpoint Protection, Dashboard appears. The Seqrite Endpoint Protection Dashboard is the main area from where you can access all the features. Dashboard is divided into various sections: Seqrite Endpoint Protection menu, system security notification area, Seqrite Endpoint Protection features, news and scan your machine option.

System security notification area indicates whether your system is secured and whether you need to take any action with the help of message and protection icon, while news area displays news about new events such as security alerts, some special release of Seqrite and so on.

System security notification area provides indication of the security status of Seqrite Endpoint Protection with the help of colored icons. The colored icons and their specific meaning are described as follows:

Icons	Description
Green	Indicates that Seqrite Endpoint Protection is configured with optimal settings and your system is protected.
Orange	Indicates that a feature of Seqrite Endpoint Protection needs your attention, if not immediately, but at the earliest.
Red	Indicates that Seqrite Endpoint Protection is not configured with optimal settings and your immediate attention is needed. The action corresponding to the message needs to be executed immediately to keep your system protected.

System security notification area is your instant interface to vital protection settings that can affect files, folders, emails, and so on. It also allows users to configure protection against viruses that try to gain entry through Internet, external drives and emails. Seqrite Protection Center is split into two sections.

- ! Each colored icon has an action associated with it which needs to be executed by the user.

Seqrite Endpoint Protection Features

Seqrite Endpoint Protection ensures complete protection against any possible threats or malware that may infect your system through various means. Seqrite Endpoint Protection shields your system in the following ways:

Features	Description
Mac Security	Helps you configure scan preferences, virus protection, schedule scan, exclude files and folders from scanning, and set rule for quarantine and files backup.
Web Security	Helps you protect your system against malicious threats when you are browsing the Internet, or when you transfer data across in the network.
Email Security	Helps you protect your system against malicious threats and spams that try to sneak into your system through emails.

The following are frequently used features:

Features	Description
Scan	Launches the scanner that scans the machine based on scanning preferences.

Seqrite Endpoint Protection Menus

With the Seqrite Endpoint Protection menus, you can configure the general settings for taking updates automatically, password protect your Seqrite Endpoint Protection so that no unauthorized person can access the Seqrite Endpoint Protection application, provide settings for proxy support and removing reports from the list automatically.

The Seqrite Endpoint Protection menu includes the following:

Menu	Description
Settings	Helps you customize and configure the settings of Seqrite Anti-Virus such as Automatic Update, Internet Settings, Password Protection, Self Protection, Device Control, and Reports Settings.
Reports	Helps you view the activity reports of Scanner, Virus Protection, Email Protection, Quick Update, Anti-Phishing, Browsing Protection, Web Security.

Quick Access Options

Quick access options are the options that you use to access Seqrite Endpoint Protection , turn on or off Virus Protection, update the product, and scan the machine when required.

The quick access options include the following:

[About Seqrite Endpoint Protection Dashboard](#)

Options	Description
Open Seqrite Endpoint Protection	Launches Seqrite Endpoint Protection.
Enable / Disable Virus Protection	Helps you turn on or turn off Virus Protection.
Update Now	Helps you update Seqrite Endpoint Protection .
Scan My Mac	Helps you scan your machine for viruses.

Help Topics

The Help topics assist you in understanding Seqrite Endpoint Protection features, how to use them, and seek technical support when required.

To access the desktop integrated Help topics, follow these steps:

- 1 Go to Seqrite Endpoint Protection > Menu > Help > Seqrite Endpoint Protection Help.

The Help topics appear.

- 2 Search for the information that you want.

About Seqrite Endpoint Protection

The About Seqrite Endpoint Protection screen includes the Company information with which Seqrite Endpoint Protection is registered.

To access the About Seqrite Endpoint Protection screen, follow these steps:

- Go to Seqrite Endpoint Protection > Menu > Seqrite Endpoint Protection > About Seqrite Endpoint Protection .

The About screen appears.

The About screen includes the following license information:

- *Seqrite Endpoint Protection License Information*: Organization Name and Virus Database Date.
- *Server Details*: After clicking the 'Server Detail' button, you will see the following information about the Seqrite Endpoint Protection Server, including the group and policy associated with the client and the network connection status between the client and server.
 - Server: The IP address or domain name of the Seqrite Endpoint Protection server.
 - Group: The Seqrite Endpoint Protection group associated with the client.
 - Policy: The Seqrite Endpoint Protection policy applied to the client.
 - Connection Status: Indicates whether the connection is active or inactive.
 - Last Connected Time: The most recent time the connection was successfully established.
 - Error Message: Provides details on any issues encountered during the connection. If no issues are present, it will state 'No Error'.

- *Update Now*: This button helps you to update Seqrite Endpoint Protection.

Updating with definition files

If you already have the update definition file with you, you can update Seqrite Endpoint Protection without connecting to the Internet. It is specifically useful for Network environments with more than one machine. You are not required to download the update file from the Internet on all the machines within the network using Seqrite.

- 1 Go to Seqrite Endpoint Protection > Menu > Seqrite Endpoint Protection > Check for Updates....
- 2 On the Welcome to Endpoint Protection Update screen, click Continue.

The *Select the mode you prefer for updating Endpoint Protection* screen appears.

- 3 Select *Pick from specified location*.
- 4 Type the path or click the File button to the file location, and then click Continue.

Note

Quick Update picks up the definition file from the designated path, verifies its applicability on the installed version and updates your copy of Seqrite Endpoint Protection accordingly.

Chapter 3. Seqrite Endpoint Protection Features

The Seqrite Endpoint Protection features include the most important features that help you set the scanning preference, protection rules for your machine, scanning schedule, set rules for Quarantine and Backup for files, apply protections for online browsing, Web Security and block malicious emails and spams.

These features provide optimum protection to your system. Moreover, these features have to be kept enabled all the time. If you disable these features, for any reasons, then the corresponding icons for them will turn red.

Mac Security

The Mac Security option on Dashboard helps you customize the settings that concern the protection of files and folders in your system. With Mac Security, you can set scanning preferences, apply rules for virus protection, schedule scanning, exclude files and folders from being scanned, and set rules for quarantine and backup files.

Mac Security includes the following:

Scan Settings

With Scan Settings, you can customize the way a scan is to be performed and the action that needs to be taken when a virus is detected. However, the default settings are optimal and can provide the required protection to your machine.

To configure Scan Settings, follow these steps:

- 1 On the Seqrite Endpoint Protection Dashboard, click Mac Security.

The Mac Security setting details screen appears.

- 2 Click Scan Settings.
- 3 Set the appropriate option for scan type, action to be taken if virus is found in the files, and whether you want to take the backup of the previous setting.
- 4 Click Save to save your settings.

Select scan type

- *Automatic (Recommended)*: Automatic scanning type is the default scanning mode, which is recommended as it ensures optimal protection that your machine requires. This setting is an ideal option for novice users as well.
- *Advanced*: Select Advanced mode if you want to customize the scanning behavior. This is ideal for experienced users only. When you select the Advanced option, the Configure button is enabled and you can configure the Advanced setting for scanning.

Action to be taken when virus is found

Action that you select here will be taken automatically if virus is found, so select an action carefully. The actions and their descriptions are as follows:

Actions	Description
Repair	During scanning if a virus is found, it repairs the file or automatically quarantines it, if it cannot be repaired. When the scan is over, a summary window appears providing the details about all the actions taken and other scan details. If the infectious file is a Backdoor, Worm, Trojan, or Malware, then Seqrite Endpoint Protection automatically deletes the file.
Delete	Deletes a virus-infected file without notifying you. When the scan is over, a summary window appears providing the details about all the actions taken and other scan details. Once the files are deleted, they cannot be recovered.
Skip	If this option is selected the files are scanned but no action is taken on the infected files and they are skipped. Select this option if you want to take no action even if a virus is found. When the scan is over a summary report appears providing all the scan details.
Backup before taking action	The scanner keeps a backup of the infected files before disinfecting them. The files that are stored in the backup can be restored from the Quarantine menu.

Configuring Advanced Scan Type

To configure Advanced Scan type, follow these steps:

- 1 On the Seqrite Endpoint Protection Dashboard, click Mac Security.

The Mac Security setting details screen appears.

- 2 Click Scan Settings.
- 3 In Scan type, select Advanced.

The Configure button is enabled.

- 4 Click Configure.

The Advanced Scan setting details screen appears.

- 5 Check *Items to be scanned* for Windows-based malwares.

By default this option is selected.

- 6 Select one of the following items for scanning:

- *Scan executable files*: Select this option if you want to scan only the executable files.
- *Scan all files*: Select this option if you want to scan all types of files. However, it takes time to execute this option and the scanning process slows down considerably.

- 7 Turn *Scan archived files* ON, and then configure the scanning preference for the archive files such as zip files and so on.

- To close the Archive Files screen, click OK. To close the Advanced Scan setting, click OK and then click Save to save your settings.

Scan archive files

If you select *Scan archive files*, then the scanner will also scan archive files such zip files, archive files, and so on. If you select *Scan archive files*, the Configure button is enabled and helps you configure the way scanner should treat malicious archive files. You can scan files of various archive file types till five levels down so to ensure no files are left from being scanned.

Following are the actions that you can select to be taken when a virus is found in any of the archive files:

Actions	Description
Quarantine	Select this option if you want to quarantine an archive file that contains a virus.
Delete	Select this option if you want to delete an archive file that contains virus-infected files. However, you are not notified if a file is deleted, though its report is generated that you may see in the Reports list.
Skip	Select this option if you want to take no action even if a virus is found in any of the archive files. However, this option is selected by default.


Archive Scan level

Set the scan level till which you want to scan the archive files. You can set till five levels down inside the archive files. By default, the scanning is set to level 2. However you can increase the archive scan level which may though affect the scanning speed.

Select archive type to scan

You can select the archive file types that you want to scan from the archive files list. Some of the common archive file types are selected by default. However, you can change your setting as you prefer.

Types	Description
Select All	Select this option to select all the archive file types available in the list.
Deselect All	Select this option to clear all the archive types available in the list.

-  When the scan is complete, a summary report appears providing the details about all the actions taken and other scan details, irrespective of the option that you had configured.
- Notification for the features such as Scan, Update, and Remote Uninstall from Seqrite EPP web console will not be sent to the users if they are not logged in to Mac.
- For schedule scan, if the system is shut down at the time of scheduled scan, the scan will not run when the system starts.

- For scheduler policy, if repeat scan is enabled, first scan will run at the scheduled start time + repeat hours.

Note: When System Integrity Protection (SIP) is enabled on macOS, Full System scan and Schedule scan will only encompass folders that are not safeguarded by SIP. Conversely, if SIP is disabled on macOS, scanning will encompass all folders.

Virus Protection

With Virus Protection, you can continuously monitor your machine from viruses, malwares, and other malicious threats. Such threats try to sneak into your machine from various sources such as email attachments, Internet downloads, file transfer, file execution and so on.

It is recommended that you always keep Virus Protection enabled to keep your machine clean and protected from any potential threats. However, Virus Protection is enabled by default that you can disable if required.

To configure Virus Protection, follow these steps:

- 1 On the Seqrite Endpoint Protection Dashboard, click Mac Security.

The Mac Security setting details screen appears.

- 2 To protect your machine from malicious threats, turn Virus Protection ON.
- 3 To configure Virus Protection further, click Virus Protection.
- 4 On the Virus Protection screen, do the following:
 - *Items to scan* – Select this check box if you want to scan Windows-based malwares. However, this check box is selected by default.
 - *Scan network volume* – Select this option if you want to scan network volumes that are mounted on your machine. However, this option is turned on by default.
 - *Display notifications* – Select YES if Display notifications is selected, it displays an alert message whenever a malware is detected. This feature is selected by default.
 - If virus found – Select an action to be taken when virus is found in a file such as Repair, Delete, and Deny Access.
 - Backup before taking action – Select this option if you want to take a backup of a file before taking an action on a file. Files that are stored in backup can be restored from the Quarantine menu.
- 5 To save your setting, click Save.

Action to be taken when virus is detected

Actions	Description
Repair	During scanning if a virus is found, it repairs the file or automatically quarantines it, if it cannot be repaired.
Delete	Deletes a virus-infected file without notifying you.
Deny Access	Restricts access to a virus infected file from use.

Turning Off Virus Protection

Turn Virus Protection OFF. However when you try to turn off Virus Protection, an alert message is displayed. Turning Virus Protection OFF is suggested only when you really require this. Moreover, you can set it off for a certain period of time so that it turns ON automatically thereafter.

Following are the options for turning Virus Protection OFF for a certain period:

- Turn on after 15 minutes
- Turn on after 30 minutes
- Turn on after 1 hour
- Turn on after next reboot
- Permanently disable

Select an option and click OK.

Once you turn off Virus Protection, its icon color changes from green to red in Menu Bar Tray, which means that Virus Protection has been disabled temporarily or permanently based on your selection. If you have selected any of the options for turning off temporarily or after next boot then the icon color changes back from red to green after the certain time passes or at the next boot. If you have selected to disable permanently, then the icon color remains red until you enable Virus Protection manually.

Schedule Scans

With Schedule Scans, you can define time when to begin scanning of your machine automatically. You can schedule multiple number of scan schedules so that you can initiate scanning of your machine at your convenient time. Frequency can be set for daily and weekly scans, that can additionally refine your request to schedule it to occur at fixed boot at fixed time.

Configuring Schedule Scans

To configure Schedule Scans, follow these steps:

- 1 On the Seqrite Endpoint Protection Dashboard, click Mac Security.
- 2 On the Mac Security setting screen, click Schedule Scans.

The Scheduled Scans details screen appears. Here you see a list of all schedules for scanning, if you had defined any before.

- 3 To create a new schedule for scanning, click Add.

The Add Scheduled Scan screen appears where you can create a new scan schedule name, its frequency, and other details.

- 4 In the Scan name text box, type a scan schedule name.
- 5 Set Scan Frequency:

- *Daily*: Select the Daily option if you want to initiate scanning of your machine daily. However this option is selected by default.
 - *Weekly*: Select the Weekly option if you want to initiate scanning of your machine on a certain day of the week. When you select the Weekly option, the Weekly list is enabled where you can select a day of the week.
- 6** Set Scan Time:
- *Start scan at first boot*: Select the *Start scan at First Boot* option to schedule the scanner to scan at first boot of the day. When you select Start at first boot, you do not have to specify the time of the day to start the scan. Scanning takes place only during the first boot irrespective at what time you start the system.
 - *Start scan at Fixed Time*: Select the *Start scan at fixed time* option if you want to initiate the scanning of your machine at a certain time. When you select Fixed Time, the Start Time list is enabled where you can fix the time for scanning. However this option is selected by default.
- 7** Set Scan priority.
- *High*: Select the High option if you want to have the scanning priority at high.
 - *Low*: Select the Low option if you want to have the scanning priority at low. However this option is selected by default.
- 8** Scan location:
- Click Configure to open the Scan location screen, where you can select files and folders for scanning. You can set multiple locations. Select the Drives, folder or multiple folders to be scanned and press OK. You can configure Exclude Subfolder while scanning specific folder. This will ignore scanning inside the subfolders while scanning.
- 9** Scan settings:
- Click Configure to open the Scan Settings screen. Under Scan Settings, you can specify specific items to be scanned, action required to be taken if a virus is found and use of advance options while scanning. By default setting is set for adequate options for scanning.
 - In Scan type, select one of the options from Automatic and Advanced. To know about how to configure scan setting, see [Scan Settings](#), p - 35.
 - Select YES if you want to have a backup of files before taking any action on them, otherwise select NO if you want no backup of files. This option is selected by default.
- 10** To save your settings, click Save.

Editing Schedule Scans

You can modify any of the scheduled scans whenever required. To edit a scheduled scan, follow the steps:

- 1** On the Seqrite Endpoint Protection Dashboard, click Mac Security.
- 2** On the Mac Security setting screen, click Schedule Scans.

A list of all scan schedules appears.

- 3 Select a scan schedule and then click Edit.
- 4 In the Add Schedule Scan screen, change the scan schedule as required.
- 5 To save your settings click Save and then click Close.

Removing Schedule Scans

If you do not require a scan schedule, you can remove it whenever you require. To remove a scan schedule, follow these steps:

- 1 On the Seqrite Endpoint Protection Dashboard, click Mac Security.
- 2 On the Mac Security setting screen, click Schedule Scans.

A list of all scan schedules appears.

- 3 Select a scan schedule, and then click Remove.
- 4 Click YES to confirm if you are sure to remove the scan schedule, and then click Close.

Exclude Files & Folders

With Exclude Files & Folders, you can decide which files and folders should not be included during scanning for known viruses or issues. This helps you avoid unnecessary repetition of scanning of the files which have already been scanned or you are sure should not be scanned. You can exclude files from scanning from both of the scanning modules Mac Security Scanner and Virus Protection.



Endpoint Protection Scanner scans files and folders when you scan manually while Virus Protection scans each file and folder when accessed automatically.

Configuring Exclude Files & Folders

To configure Exclude Files & Folders, follow these steps:

- 1 On the Seqrite Endpoint Protection Dashboard, click Mac Security.
- 2 On the Mac Security setting screen, click Exclude Files & Folders.

The Exclude Files & Folders details screen appears. Here you see a list of files and folders to be excluded from scanning, if you have added any.

- 3 Click Add.
- 4 On the New Exclude Item screen, click the File button or Folder button to add relevant file or folder to the list.

When you add a folder you can check Exclude Subfolders so that the subfolders are also excluded from scanning.

- 5 Select a file or folder, and then click Open to add the selected file or folder and then click Save to save your settings.
- 6 To close the Exclude Files and Folders screen, click Close.

Editing Exclude Files & Folders

You can change your setting for Exclude Files & Folders if you require so in the following ways:

- 1 On the Seqrite Endpoint Protection Dashboard, click Mac Security.
- 2 On the Mac Security setting screen, click Exclude Files & Folders.

The Exclude Files & Folders details screen appears. Here you see a list of files and folders to be excluded from scanning that you have added.

- 3 Under Location, select a file or folder, and then click Edit.
- 4 On the New Exclude Item screen, click the File button or Folder button to add another file or folder to the list.

When you add a folder you can check Exclude Subfolders so that the subfolders are also excluded from scanning.

- 5 Select a file or folder, and then click Open to add the selected file or folder and then click Save to save your settings.
- 6 To close the Exclude Files and Folders screen, click Close.

Removing Exclude Files & Folders

You can remove any files or folders that you included in the Exclude Files & Folders list if you require so in the following ways:

- 1 On the Seqrite Endpoint Protection Dashboard, click Mac Security.
- 2 On the Mac Security setting screen, click Exclude Files & Folders.

The Exclude Files & Folders details screen appears. Here you see a list of files and folders to be excluded from scanning that you have added.

- 3 Under Location, select a file or folder, and then click Remove. You can remove all files and folders from the list by clicking Remove All.

The selected files or folders are removed from the exclusion list.

- 4 To close the Exclude Files and Folders screen, click Close.

Quarantine & Backup

Quarantine & Backup helps in safely isolating the infected or suspected files. When a file is added to Quarantine, Seqrite Endpoint Protection encrypts the file and keeps it inside the Quarantine folder. Being kept in an encrypted form, these files cannot be executed and hence are safe. Quarantine also keeps a copy of infected file before repairing if the Backup before repairing option is selected in the Scanner Settings.

With Quarantine & Backup, you can also set a rule for removing the files after a certain period of time and having a backup of the files.

Configuring Quarantine & Backup

To configure Quarantine & Backup, follow these steps:

- 1 On the Seqrite Endpoint Protection Dashboard, click Mac Security.

- 2 On the Mac Security setting screen, click Quarantine & Backup.
- 3 In Delete files automatically after, drag the slider to select days after which the files should be removed from the Quarantine folder automatically.



Setting this feature helps in removing the quarantine/backup files after the configured period of time. The removal of files is set to 30 days by default.

- 4 Click View Files to see the quarantined files. You can take any of the following actions on the quarantined files:
 - *Add File*: You can add files from folders and drives to be quarantined manually.
 - *Restore Selected*: You can restore the selected files manually if required so.
 - *Submit Selected*: You can submit the suspicious files to Seqrite research lab for further analysis from the Quarantine list. Select the file which you want to submit and then click Submit.
 - *Delete Selected*: You can delete the selected files from the quarantine list.
 - *Remove All*: You can remove all the Quarantine files from the Quarantine list.
 - Submit Quarantine file functionality.

In Quarantine, when you select a file and click the Submit button, a prompt appears requesting permission to provide your email address. You also need to provide a reason for submitting the files. Select one of the following reasons:

- *Suspicious File* – Select this reason if you feel that a particular file in your system has been the cause of suspicious activity in the system.
- *File is unrepairable* – Select this reason if Seqrite has been able to detect the malicious file on your system during its scans, but has not been able to repair the infection of the file.
- *False positive* – Select this reason if a non-malicious data file that you have been using and are aware of its function, has been detected by Seqrite as a malicious file.

Web Security

With Web Security, you can set the protection rules to save your machine from malicious files that can sneak into your system during online activities such as banking, shopping, surfing and so on.

Web Security includes the following:

Browsing Protection

With Browsing Protection, you can block malicious websites while browsing so that you do not come in contact with malicious websites and you are secure. However, Browsing Protection is enabled by default.

Configuring Browsing Protection

To configure Browsing Protection, follow these steps:

- 1 On the Seqrite Endpoint Protection Dashboard, click Web Security.
- 2 Enable Browsing Protection.

You can disable Browsing Protection whenever you prefer.

Phishing Protection

With Phishing Protection, you can prevent access to phishing and fraudulent websites. Phishing is a fraudulent attempt, usually made through email, to steal your personal information. It usually appears to have come from well-known organizations and sites such as banks, companies and services with which you do not even have an account and, ask you to visit their sites telling you to provide your personal information such as credit card number, social security number, account number or password.

Phishing Protection automatically scans all accessed web pages for fraudulent activity protecting you against any phishing attack as you surf the Internet. It also prevents identity theft by blocking phishing websites, so you can do online shopping, banking and website surfing safely.

Configuring Phishing Protection

To configure Phishing Protection, follow these steps:

- 1 On the Seqrite Endpoint Protection Dashboard, click Web Security.
- 2 Enable Phishing Protection.

You can disable Phishing Protection whenever you prefer. However, you are advised always to keep Phishing Protection enabled.

Email Security

With Email Security, you can customize the protection rules for receiving emails from various sources. You can set rules for blocking emails which are suspicious of spam, or malware.

Email Security includes the following.

Email Protection

With Email Protection, you can enable protection rule for all incoming emails. You can block the infected attachment in the emails that may be suspicious of malwares, spams, and viruses. You can also customize the action that needs to be taken when a malware is detected in the emails.

However, Email Protection is enabled by default and the default settings provide the required protection to the mailbox from malicious emails. We recommend that you always keep Email Protection enabled to ensure email protection.

Configuring Email Protection

To configure Email Protection, follow these steps:

1 On the Seqrite Endpoint Protection Dashboard, click Email Security.

2 On the Email Security setting screen, enable Email Protection.

Protection against malwares coming through emails is enabled.

3 To configure further, protection rules for emails, click Email Protection.

4 Turn *Notify on email* ON if you want an alert message when a virus is detected in an email or attachment.

! The alert message on virus includes the following information: Virus Name, Sender Email Address, Email Subject, Attachment Name, and Action Taken.

5 Select one of the following actions to be taken if virus is found.

- *Repair*: Select Repair to get your emails or attachment repaired when a virus is found
- *Delete*: Select Delete to delete the infected emails and attachments.

! If the attachment cannot be repaired then it is deleted.

6 Switch *Backup before taking action* to YES if you want to have a backup of the emails before taking an action on them.

You can revert to default settings anytime you require so by clicking Set Defaults.

7 To save your settings, click Save.

Spam Protection

With Spam Protection*, you can block all unwanted emails such as spam, phishing and porn emails, from reaching into your mailbox. Spam Protection is enabled by default and we recommend you always keep the feature enabled.

Configuring Spam Protection

To configure Spam Protection, follow these steps:

1 On the Seqrite Endpoint Protection Dashboard, click Email Security.

2 On the Email Security setting screen, turn Spam Protection ON.

3 To configure further protection rules for spam, click Spam Protection.

4 Turn *Tag subject with text* ON to include the tag "spam" to the suspicious emails.

5 Select one of the following:

- Turn White List ON if you want to allow emails from the email addresses enlisted in the white list to skip from spam protection filter, and then click Configure to enter the email addresses.
- Turn Black List ON if you want to filter out emails from the email addresses enlisted in the black list and then click Configure to enter the email addresses.

- 6 Click OK.
- 7 To save your settings, click Save.

Setting spam protection rule for White List

White List is the list of email addresses from which all emails are allowed to skip from spam protection filter irrespective of their content. No emails from the addresses listed here are passed through the SPAM filter. It is suggested that you configure only such email addresses which you rely fully.

To add email addresses in the White List, follow these steps:

- 1 Turn White List ON.

The Configure button is enabled.

- 2 Click Configure.
- 3 Enter the email addresses in the list and click Add.

Edit or Remove Email: To edit an email address, select the email address in the list and click Edit. To remove an email address, select an email address and click Remove.

Import White List: You can import the White List by clicking Import. This is very helpful if you have a long list of email addresses to enlist.

Export White List: You can export the White List by clicking Export. This exports all the email addresses existing in the list. This is helpful if you want to import the same email addresses later. You can simply import the email addresses list.

- 4 To save your settings, click OK.

Setting spam protection rule for Black List

Black List is the list of email addresses from which all emails are filtered irrespective of their content. All the emails from the addresses listed here are tagged as "[SPAM] -". This feature should be specifically evoked in case some server has an Open Relay which is being misused by Mass Mailers and viruses.

To add email addresses in the Black List, follow these steps:

- 1 Turn Black List ON.
- The Configure button is enabled.
- 2 Click Configure.
 - 3 Enter the email addresses in the list and click Add.

Important: While entering an email address, be careful that you do not enter the same email address in the black list that you entered in the white list, else a message appears.

Edit or Remove Email: To edit an email address, select the email address in the list and click Edit. To remove an email address, select an email address and click Remove.

Import Black List: You can import the Black List by clicking Import. This is very helpful if you have a long list of email addresses to enlist.

Export Black List: You can export the Black List by clicking Export. This exports all the email addresses existing in the list. This is helpful if you want to import the same email addresses later. You can simply import the email addresses list.

4 To save your settings, click OK.

Adding Domains to White List or Black List

To add specific domain in the White List or Black List, follow these steps:

- 1 Turn White List or Black List On and click Customize.
- 2 Type the domain and click Add. For editing an existing entry, click Edit.

Note

The domain should be in the format: **@mytest.com*.

3 To save the changes, click OK.

Note

*Spam Protection is available only with the Advanced and Premium flavor of Seqrite Endpoint Protection.

Chapter 4. Scanning Options

Scan My Mac option on Dashboard provides you with options of scanning your system in various ways so that you can scan as you require. You can initiate scanning of your entire system, drives, network drives, USD drives, folders or files, certain locations (Custom Scan). Although the default settings for manual scan are usually adequate, you can adjust the options for manual scan.

Scan My Mac

Scan My Mac is a complete scanning of your system. With Scan My Mac, you can scan the entire machine, files and folders excluding mapped network drives, folders, and files whenever you think your system needs scanning. However, if you keep Virus Protection enabled, you need not run a manual scan. Moreover, the default setting for manual scan is usually adequate, you can adjust the options for manual scan if required.

To initiate Scan My Mac, follow these steps:

- 1 On the Seqrite Endpoint Protection Dashboard, click the Scan My Mac list showing at the bottom right.
- 2 On the scan option, click Scan My Mac to initiate complete scanning of your machine.

Upon completion of the scan, you can view the scan report under Reports > Scanner Reports.

Custom Scan

With Custom Scan, you can scan specific records, drives, folders, and files on your machine that you require. This is helpful when you want to scan only certain items and not the entire system.

To initiate Custom Scan, follow these steps:

- 1 On the Seqrite Endpoint Protection Dashboard, click the Scan My Mac list showing at the bottom right .
- 2 On the scan option, click Custom Scan.
- 3 Click Add to locate the path of the desired folder or drives that you want to scan.

You can select multiple folders for scanning. If you want to remove a file from being scanned, select the file and click Remove. To remove all the files from scan, click Remove All.

- 4 To initiate scanning, click Start Scan.

Upon completion of the scan, you can view the scan report under Reports > Scanner Reports.

Chapter 5. Seqrite Endpoint Protection Menus

The Seqrite Endpoint Protection menus, available on the top left corner on the Seqrite Endpoint Protection Dashboard, give you instant access to the settings and report topics options irrespective of the feature being accessed.

With the Seqrite Endpoint Protection menus, you can configure general settings to take the updates automatically, password-protect your Seqrite Endpoint Protection settings so unauthorized users cannot access your settings, set proxy support, and schedule removing reports from the report list.

Reports

Seqrite Endpoint Protection creates and maintains a detailed report of all important activities such as on virus scan, updates details, changes in settings of the features, and so on.

The reports on the following features of Seqrite Endpoint Protection can be viewed:

- Scanner
- Virus Protection
- Email Protection
- Automatic Update
- Browsing Protection
- Phishing Protection
- Web Security

Viewing Reports

To view reports and statistics of different features, follow these steps:

- 1 On the Seqrite Endpoint Protection Dashboard, click Reports.

A Reports list appears.

- 2 To view the report of a feature, click the report name. For example, if you want to view the report on Virus Protection, click Virus Protection Reports.

The report details list appears. The report statistics on each feature includes Date and Time when the report was created and the reason for which the report was created.

Buttons	Actions
Details	Helps you view a detailed report of the selected record.
Delete	Helps you delete the highlighted report in the list.
Delete All	Helps you delete all the reports.
Close	Helps you to exit from the window.

Settings

With Settings, you can configure some of the common settings of Seqrite Endpoint Protection such as you can decide whether you want to take the updates automatically, password-protect

your Seqrite Endpoint Protection settings so unauthorized users cannot access your settings, set proxy support, and scheduling the removal of reports from the report list. However, the default settings are optimal and ensure complete security to your system.

Settings includes the following:

Automatic Update

With Automatic Update, Seqrite Endpoint Protection can take the updates automatically to keep your software updated with the latest virus signatures to protect your system from new malwares. It is recommended that you always keep Automatic Update enabled, which is enabled by default.

Configuring Automatic Update

To configure Automatic Update, follow these steps:

- 1 On the Seqrite Endpoint Protection Dashboard, click Settings.
- 2 On the Settings screen, turn Automatic Update ON and then click Automatic Update.
- 3 On the Automatic Update screen, turn Show notification YES.

By default this feature is enabled. If Show Notification is turned on, you receive a notification each time new updates are received, and you get a notification pop-up on Dashboard.

- 4 Select one of the following:
 - *Download from Internet:* This option helps you download the updates to your machine directly from the Internet. You may select this option in case your machine is not connected with Endpoint Protection Server through LAN. This option is selected by default.
 - *Download from Update Agent:* Select this option if you want to pick the updates from the Update Agent.

For the Mac client, to take updates from the Update Agent, hostname and IP of the Update Agent should be added in the hosts file on Mac system.

To add the hostname in the hosts file, do the following:

- v. Open the Terminal on Mac OS.
 - vi. Enter command `cd /etc`.
 - vii. Enter command `sudo vi hosts`
 - viii. Enter the hostname and IP of the available Update Agents in the hosts file.
 - ix. Save the hosts file.
- 5 Switch Save update files to YES.

Select this option if you want to save a copy of the updates downloaded to your local folder or network folder. The Browse button is enabled. The Save update files option is enabled when you select Download from Internet.

- 6 Click Browse to specify a folder or network folder to save a copy of the updates downloaded from the Internet.
- 7 To save your settings, click Save.

Self Protection

With Self Protection, you can restrict unauthorized users from altering or tampering the files, folders, configurations, and Plist entries of Seqrite Endpoint Protection configured against malware. It is recommended that you always keep Self Protection turned on.

Configuring Self Protection

To configure Self Protection, follow these steps:

- 1 On the Seqrite Endpoint Protection Dashboard, click Settings.
- 2 On the Settings screen, turn Self Protection ON.

However, Self Protection is turned on by default.

Password Protection

With Password Protection, you can restrict all other users from accessing Seqrite Endpoint Protection so that no unauthorized users can make any changes in the settings. You are recommended to always keep Password Protection enabled.

Configuring Password Protection

To configure Password Protection, follow these steps:

- 1 On the Seqrite Endpoint Protection Dashboard, click Settings.

Password Protection is turned off by default that you can turn on if required.

- 2 On the Settings screen, turn Password Protection ON.

The password protection screen appears.

- 3 Enter password in the New Password text box and then confirm the password by entering it in Retype New Password.

If you are setting the password for the first time, then Existing Password is disabled.

- 4 To reset your password, click Password Protection.
- 5 To save your setting, click Save.

Device Control

With this feature, the administrators can create policies with varying rights. For example, administrators can block complete access to removable devices, give Read only and no write access so that nothing can be written on the external devices. They can also customize access to the devices configured by the administrators. Once the policy is applied to a group, the access rights are also applied.

Following is a comparison of device types across different Mac systems:

Seqrite Endpoint Protection Menus

Devices	Device Types	macOS Catalina and below	macOS Big Sur and above
Storage Devices	USB Storage Device	√	√
	Internal CD/DVD	√	√
	Internal Card Reader	√	√
	Internal Floppy Drive	X	X
	ZIP Drive	X	X
Wireless	Wi-Fi	√	√
	Bluetooth	√	√
Interface	FireWire Bus	√	X
	Serial Port	X	X
	SATA Controller	X	X
	Thunderbolt	√	√
	PCMCIA Device	X	X
	USB	√	√
Others	Local Printers	√	√
	Teensy Board	X	X
	Network Share	X	X
	Unknown Device	X	X
Card Readers	Card Reader Device (MTD)	X	X

	Card Reader Device (SCSI)	X	X
Mobile & Portable Devices	Windows Portable Device	√	√
	iPhone	√	√
	iPad	√	√
	iPod	√	√
	BlackBerry	X	X
	Mobile Phones (Symbian)	X	X
	Scanner & Imaging Devices	X	X
Camera	Webcam	√	X
Temporary Device Access		√	√
Device Exceptions		√	√

The Device Control policies can be configured remotely through Seqrite Endpoint Protection Cloud console.

Configuring Device Control on Mac Client

To configure Device Control, follow these steps:

- 1 On the Seqrite Endpoint Protection Dashboard, click Settings.
- 2 On the Settings screen, turn Device Control ON.

However, Device Control is turned off by default.

The following are the exceptional conditions

- If the option 'Read only' is selected in Device Control of Seqrite EPP and a USB device is attached such a device may not be accessible from the left pane in Finder for some time.
- If a USB device is to be shown as mounted or unmounted using terminal commands, the Device Control policy will not apply to that device.
- Attached CD/DVD will get both read and write permissions even though the Read only setting is applied in Seqrite EPP Device Control.
- If any of the iDevices, Webcam, CD/DVD, Internal Card Reader, Mobile Phones, and HFS Encrypted devices are already attached to the endpoint and the Device Control settings are

changed, the attached devices need to be re-attached so that the access rights are applied to the new devices.

- Exception functionality is not applicable for Bluetooth, Wi-Fi, Webcam, and External CD/DVD.
- Multiple notifications may be generated for CD/DVD.
- Mobile phones except iDevices that are connected in MTP mode, will be detected under the *USB storage devices* category.
 - Mobile Phones connected in MTP mode will be detected under the *Windows Portable Devices* category.
- If you are installing Mac client with USB devices attached to the system, such devices get unmounted for a few seconds after installation.
- If a USB device with NTFS file system is attached during Mac client installation, two copies of one attached USB may be visible for a few seconds.
- USB storage device will not be formatted with Mac OS extended (Journaled, Encrypted) file format.
- The 'Authorized Wi-Fi connections' feature is not supported on Mac operating system.
- If the Wi-Fi connection is inadvertently blocked by the Admin via policy, the Wi-Fi connection on the respective Mac endpoint will be disconnected. To re-enable it from the endpoint, please follow the steps below:
 - Login to Endpoint Protection Cloud Console > Click 'Endpoint Protection' > click 'status' tab > select Mac endpoint from where Wi-Fi gets disabled > click 'Client Actions' > select 'Temporary Device Access' from drop down list > click 'Submit' > set time duration as per requirement under 'Allow temporary access for' and 'Use OTP within' > Click 'Generate OTP' > Note down the generated OTP.
 - Now go to the Mac endpoint system > click Seqrite Endpoint Protection system tray icon > select 'Allow Temporary Device Access' from the drop-down list > Enter the OTP which is generated at EPP Console. Now devices will get accessible for defined time interval set in the EPP console.
 - Again go to the EPP Cloud console > click 'Policies' > click edit on respective policy of Mac endpoint > click 'Advance Device Control' tab > click 'Wireless and Wired' > Allow the 'Wi-Fi' and Save policy.
 - Enable Wi-Fi on Mac endpoint.
 - Admin can ask user to click on 'Sync Now' from Seqrite Endpoint Protection system tray icon drop down list from respective Mac endpoint or wait for heartbeat and once that is success then Admin can ask user to click the "Temporary device access" from Seqrite Endpoint Protection system tray icon drop down list or it will expire automatically after set time in the EPP Cloud console under Allow Temporary Device Access.
- Asset Management: For Apple_APFS file system, OS drive will not appear in the Disk storage section of Hardware Details.

Data Loss Prevention (DLP)

The following are the exceptional conditions

- If Mac Applications are installed and launched from any location other than “Applications” folder when DLP is enabled and all file types are monitored for blocking in those applications, the applications won’t be launched.
- DLP block functionality will not work on macOS Catalina 10.15 and above if attachment sent through any mail application through Safari browser.
- File downloading is getting blocked through browser if DLP is enabled.

Proxy Support

With Proxy Support, you can enable proxy support, set proxy type, configure IP address, and port of the proxy for using Internet connection. If you are using a proxy server on your network, or using Socks Version 4 & 5 network then you need to enter the IP address (or domain name) and port of the proxy, SOCKS V4 & SOCKS V5 server in Internet settings.

However, if you configure Proxy Support, you have to enter your username and password credentials. The following Seqrite modules require these changes:

- Registration Wizard
- Mac Security Update
- Messenger
- Web Security (Browser protection, Phishing protection and Spam Protection)

Configuring Proxy Support

To configure Proxy Support, follow these steps:

- 1 On the Seqrite Endpoint Protection Dashboard, click Settings.
- 2 On the Settings screen, click Proxy Support.
- 3 On the Proxy Support screen, turn Proxy support ON to enable proxy support.

The Select proxy type, Enter server, Enter port, and user credentials text boxes are enabled.

- 4 Select the proxy type from HTTP, SOCKS V4, SOCKS V5 based on your preference.
- 5 In the Enter Server text box, enter the IP address of the proxy server or domain name.
- 6 In Enter port text box, enter the port number of the proxy server.

By default port number is set as 80 for HTTP and 1080 for SOCKS V4, SOCKS V5.

- 7 Enter user name and password credentials.
- 8 To save your settings, click Save.

Report Settings

With Report Settings, you can set rules for removing the reports generated on all activities automatically. You can specify the number of days when the reports should be removed from

the list. You can also retain all the reports generated if you need them. However, the default setting for deleting reports is 30 days.

Configuring Report Settings

To configure Report Settings, follow these steps:

- 1 On the Seqrite Endpoint Protection Dashboard, click Settings.
- 2 On the Settings screen, click Report Settings.
- 3 On the Report Settings screen, turn *Automatically delete reports* ON to remove reports after the specified number of days. If you want to retain all the reports generated, turn *Automatically delete reports* OFF.
- 4 Select the period from the Delete after list after which you want the reports to be deleted.
- 5 To save your setting, click Save.

Chapter 6. **Updating Software & Cleaning Viruses**

The updates for Seqrite Endpoint Protection are released regularly on the website of Seqrite that contain detection and removal of newly discovered viruses. To prevent your machine from new viruses, you should have the updated copy of Seqrite Endpoint Protection . By default, Seqrite Endpoint Protection is set to update automatically from the Internet. This is done without the intervention of the user. However, your machine must be connected to the Internet to get the updates regularly. Automatic updates can also be applied from local or network path, but that path should have the latest set of definitions.

Some important facts about the Seqrite Endpoint Protection updates are:

- All Seqrite Endpoint Protection updates are complete updates including Definition File Update and Engine Updates.
- All Seqrite Endpoint Protection updates also upgrade your version whenever required, thus making the new features and technology available for your protection.
- Seqrite Endpoint Protection Update is a single step upgrade process.

Updating Seqrite Endpoint Protection from Internet

The Update Now feature keeps your copy of Seqrite Endpoint Protection updated automatically through the Internet. However, your machine must be connected to the Internet to get the updates regularly. This feature works for all types of Internet connections (Dialup, ISDN, Cable, etc.).

You can also update Seqrite Endpoint Protection manually whenever required so in any of the followings ways:

- Click the Seqrite Endpoint Protection icon in the menu bar, and then select Update Now.
- If the Seqrite Endpoint Protection Dashboard is open, click Update Now which appears if the protection is out of date.
- Open Seqrite Endpoint Protection , and then on the menu bar, go to Seqrite Endpoint Protection > About Seqrite Endpoint Protection . On the About Seqrite Endpoint Protection page, select Update Now.

Update of Seqrite Endpoint Protection is initiated.

Ensure that your machine is connected to the Internet, Endpoint Protection Update connects to the Seqrite Endpoint Protection Cloud website and downloads the appropriate update files for your software and applies it thereafter to your copy thus updating it to the latest available update file.

Updating Seqrite Endpoint Protection with definition files

If you have the update definition file with you, you can update Seqrite Endpoint Protection without connecting to the Internet. It is useful for Network environments with more than one

machine. You are not required to download the update file on all the machines within the network. You can download the latest definition files from the Seqrite website on one computer and then update all other machines with definition files.

To update Seqrite Endpoint Protection through definition file, follow these steps:

- 1 On the Seqrite Endpoint Protection Dashboard, click Settings.
- 2 Turn Automatic Update ON, and then click Automatic Update.
- 3 Turn Show notification ON to receive notification when updated is needed.
- 4 Check *Pick from specified path*, and then specify the location from where the updates are to be picked up.
- 5 To save your settings, click Save.

Your copy of Seqrite Endpoint Protection is updated from the specified location.

Update Guidelines for Network Environment

Seqrite Endpoint Protection can be configured to provide hassle free updates across the network. You are suggested the following guidelines for best results:

- 1 Setup one computer (may be a server) as the master update machine. Suppose server name is SERVER.
- 2 Make SEQRITEUPD folder in any location. For example: SEQRITEUPD .
- 3 Assign the Read-Only sharing right to this folder.
- 4 On the Seqrite Endpoint Protection Dashboard, click Settings.
- 5 On the Settings screen, click Automatic Update.
- 6 Switch *Save update files* to Yes.
- 7 Click Browse and locate the SEQRITEUPD folder. Click Open.
- 8 To save your setting, click Save.
- 9 On all other computers within the network, launch Seqrite Endpoint Protection .
- 10 Go to the Settings details screen and select Automatic Update.
- 11 Select *Pick update files from specified path*.
- 12 Click Browse.
- 13 Locate the SERVER\SEQRITEUPD folder from Network Neighborhood. Alternatively, you can type the path as \\SERVER\SEQRITEUPD.
- 14 To save the settings, click Save.

Cleaning Viruses

Seqrite warns you of a virus infection when:

- A virus is encountered during a manual scan.
- A virus is encountered by Seqrite Endpoint Protection Virus Protection/Email Protection.

Cleaning viruses encountered during scanning

Seqrite Endpoint Protection is adequately configured with all the required settings with default installation to protect your machine. If a virus is detected during scanning, Seqrite Endpoint Protection tries to repair the virus. However, if it fails to repair the files of the viruses, such files are quarantined. In case you have customized the default scanner settings, then take an appropriate action when a virus is found.

Scanning Options

During scanning you are provided with the following options for your ease of operation:

Options	Description
Status Tab	Displays the status on scanning.
Action Tab	Displays the action taken on the files.
Skip Folder	Helps you avoid scanning the current folder. Scanning moves to other location. This option is useful while scanning a folder which you know contains non-suspicious items.
Skip File	Helps you avoid scanning the current file. This option is useful while scanning a large archive of files.
Pause	Helps you pause scanning while scanning is under process. This is a temporary break and you may restart scanning after some time.
Stop	Helps you stop the scanning process. This is a permanent break and you cannot restart scanning from the same instance.
Close	Helps you exit from the scanning process.
Scanning Status	Displays the status of scanning process in percent.

Chapter 7. Technical Support

Seqrite provides extensive technical support for its registered users. It is recommended that you have all the necessary details with you during the call to receive efficient support from the support executives of Seqrite.

The Support option includes FAQ (Frequently Asked Questions) where you can find answers to the most frequently asked questions, send emails about your queries, or call us directly.

To see the support options, follow these steps:

- 1 Open Seqrite Endpoint Protection .
- 2 On the Seqrite Endpoint Protection menu bar, go to Help > Support.

Support includes the following options.

Phone support: Helps you call our support team to get your issues resolved.

Contact number for phone support: 1800 212 7377

Submit a Query (Email Support): Helps you send us your query. We will revert with an appropriate answer soon.

Chat With Us (Live chat support): Helps you chat with our support executives to get your issues resolved instantly.

Locate Dealer: Helps you locate a dealer nearest to your location.

Other Sources of Support

To get other sources of support, visit: http://www.seqrite.com/contact_support.

For support in specific country, visit: http://www.seqrite.com/int_techsupp.

Head Office Contact Details

Quick Heal Technologies Limited

(Formerly Known as Quick Heal Technologies Pvt. Ltd.)

Reg. Office: Marvel Edge, Office No. 7010 C & D, 7th Floor,

Viman Nagar, Pune 411014.

Official Website: <http://www.seqrite.com>

Email: support@seqrite.com