



OVA Deployment Guide

V8.4

www.seqrite.com

Copyright Information

Copyright © 2008–2025 Quick Heal Technologies Ltd. All Rights Reserved.

No part of this publication may be reproduced, duplicated, or modified in any form or incorporated into any information retrieval system, electronic or any other media or transmitted in any form without prior permission of Quick Heal Technologies Limited, Solitaire Business Center, Office No.7010 C & D, 7th Floor, Viman Nagar, Pune 411014, Maharashtra, India.

Marketing, distribution or use by anyone barring the people authorized by Quick Heal Technologies Ltd. is liable to legal prosecution.

Trademarks

Seqrite and DNAScan are registered trademarks of Quick Heal Technologies Ltd. while Microsoft and Windows are registered trademarks of Microsoft Corporation. Other brands and product titles are trademarks of their respective holders.

License Terms

Installation and usage of Seqrite Endpoint Protection is subject to user's unconditional acceptance of the Seqrite end-user license terms and conditions.

To read the license terms, visit <http://www.seqrite.com/eula> and check the End-User License Agreement for your product.

Contents

Overview	2
Prerequisites.....	2
Hardware Prerequisites:	2
Software Prerequisites:.....	2
Network Prerequisites:	2
Supported Web Browsers:	3
Deploy OVA on VirtualBox	3
Configure Server.....	5
Steps to install Seqrite EPP 8.4:	7
Steps to Offline Activation.....	9
Log on to Server	11
Exiting the Setup	11

Overview

This document helps you, deploy OVA on the VirtualBox, and set up Seqrite Endpoint Protection server.

OVA (Open Virtualization Appliance) file contains a compressed version of a virtual machine. When you deploy an OVA file, the virtual machine is extracted and imported into the virtualization software installed on your computer.

The OVA build file is provided to address any of the following scenarios at the customer end.

- Ubuntu 24.04.3 LTS machine is not available.
- Only Windows machines are available.

This OVA will create an Ubuntu 24.04.3 LTS machine on top of the VirtualBox and then you can proceed through the configuration of the pre-installed EPP server.

Prerequisites

Hardware Prerequisites:

- Physical Windows Machine with
 - RAM 16GB or more
 - Disk space: 150GB or above
 - CPU: 8 Core (x86-64) or above, 2.6GHZ or above

Software Prerequisites:

- The VT-x must be enabled in the physical machine's BIOS
- The AVX must be enabled in the physical machine's BIOS
- Oracle Virtual Box 7.2.6

Network Prerequisites:

- Keep the following details ready and handy
 - Static IP Address
 - Gateway
 - Subnet mask
 - DNS (*DNS not required if you are creating an offline/without internet setup*)
- If you are planning to use the proxy server, keep the proxy server details handy

Supported Web Browsers:

- Google Chrome v67 and above
- Mozilla Firefox v65 and above
- Microsoft Edge
- For supported File extensions, Ports, and URLs refer this [topic](#).

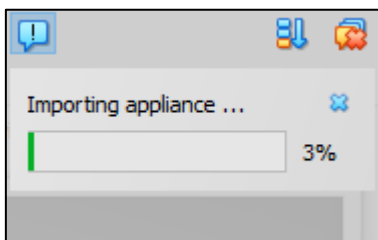
Note: For seamless working of OVA over virtual box, it is recommended to have only one hypervisor installed on the system. Other than the Oracle Virtual Box, ensure that no other hypervisor is installed on the system. The system requirements and prerequisites shared here are for the number of endpoints ranging between 1 to 2000.

For more than 2000 endpoints please refer [here](#).

Deploy OVA on VirtualBox

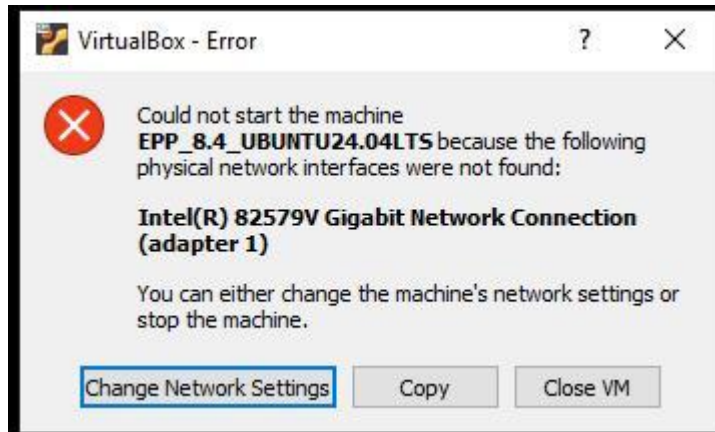
Get the EPP 8.4 OVA build from the link below. Keep the product key handy as you will be shown the download link only after entering the product key:

- <https://www.segrite.com/segrite-product-installer/>
1. Download and install Oracle VirtualBox on Windows machine
 2. Open the VirtualBox
 3. Go to **File > Import Appliance**
 4. Click **Browse** and select **EPP_8.4_UBUNTU24.ova** file you just downloaded
 5. Click **Next** and follow the wizard
 6. Click **Import**.



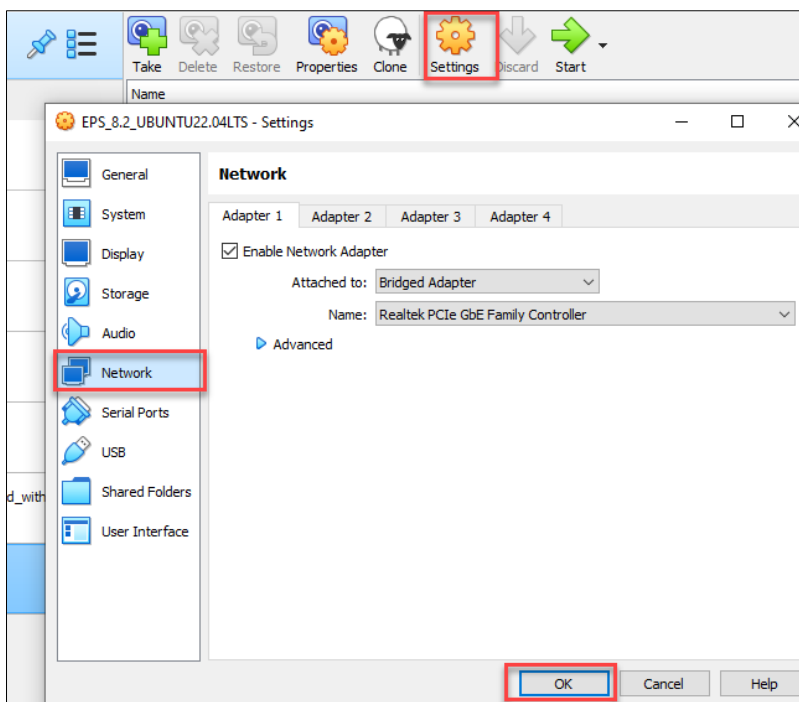
When the Import is complete, VirtualBox creates the VM with Ubuntu 24.04.3 with the required EPP 8.4 packages. On this VM, you will be guided to configuring and installing the EPP 8.4 server.

7. Once the import is completed, Start the VM and it will show the Network Error prompt shown below. (Here, you need to click 'Change Network Settings.')

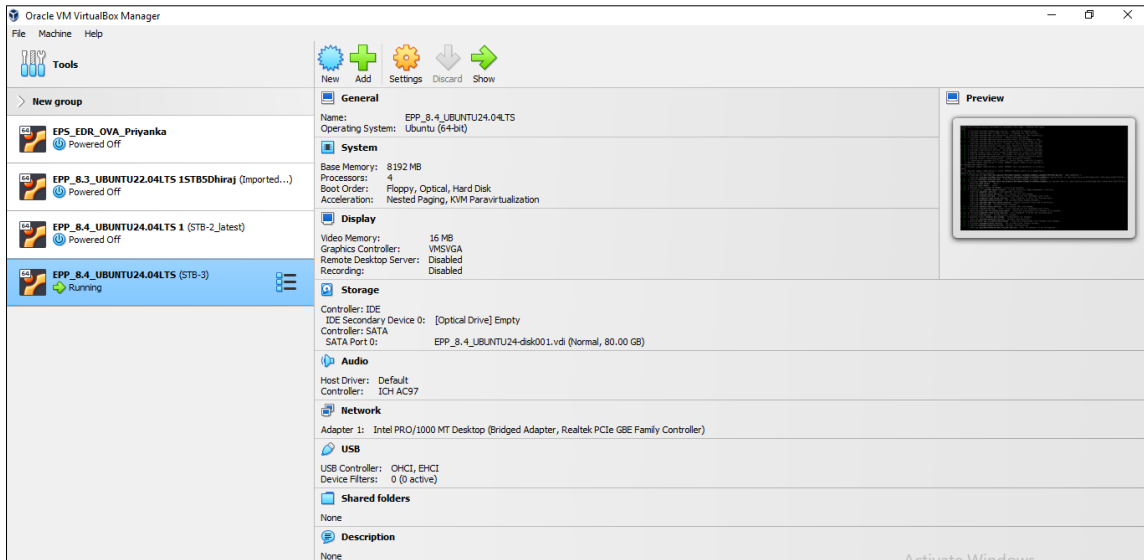


The error prompt disappears.

8. Go to **Settings** > **Network**. Click **Ok**.



9. Oracle VM VirtualBox Manager window appears.



10. Now click **Start** icon to start the VM.

Configure Server

1. On the VM, login with the given credentials.

To get the credentials, please contact [support](#) team.

Note: It is recommended to change the password after installing the EPP server. You will be shown a prompt to do the same right after EPP 8.4 is successfully installed.

2. Provide the following details one after another and hit [Enter].

- Static IP Address
- Subnet mask
- Gateway
- DNS

```

Welcome to OVA pre-installed product deployment wizard
This will guide you through rest of the configuration process
-----
Beginning configuration

Setting up IP configuration for epp OVA deployment
Please provide IP address
1 

Please provide subnet mask
2 

Please provide gateway
3 

Please wait while IP configuration is in progress

Enter DNS IP for setup with internet, or hit [Enter] to skip.

```

3. As you can see in the above image, DNS IP is needed only if you want to create a setup with internet (connected to internet/online setup).
4. If you wish to create offline setup (a setup without internet) then skip the last input field just by hitting [Enter] key, leave it blank. The further images show that DNS IP is given for the sake of example.

```

Welcome to OVA pre-installed product deployment wizard
This will guide you through rest of the configuration process
-----
Beginning configuration

Setting up IP configuration for epp OVA deployment
Please provide IP address
1 

Please provide subnet mask
2 

Please provide gateway
3 

Please wait while IP configuration is in progress

Enter DNS IP for setup with internet, or hit [Enter] to skip.
4 

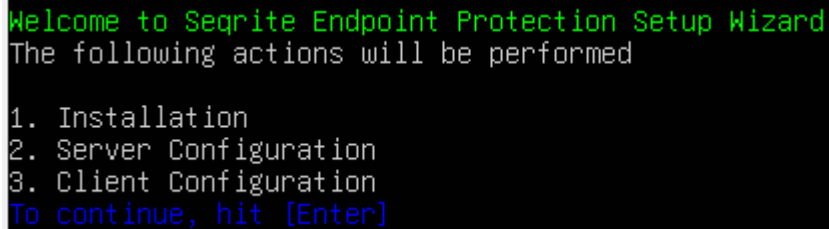
Please wait while we check for internet connectivity

Internet connection is successful via 

```


Steps to install Seqrite EPP 8.4:

Once the IP configuration is successful it will take you to the product installation wizard shown below:



```
Welcome to Seqrite Endpoint Protection Setup Wizard
The following actions will be performed

1. Installation
2. Server Configuration
3. Client Configuration
To continue, hit [Enter]
```

- The Installer Wizard screen appears. Select 1 for installation and hit [Enter]
- On the License agreement screen hit [Enter] to proceed or hit R to read the details.
- Hit A to accept the License Agreement or D to decline. If you hit D, the installer will exit. Hitting A will continue the installation.
- Next, the Privacy Policy screen will appear. Hit [Enter] to proceed, or R to read the details.
- Hit A to accept the Privacy Policy or D to decline. If you hit D, the installer will exit. Hitting A will continue the installation.
- Next, the Customer Information screen will appear. Enter the First Name, Last Name, Company Name, Administrator Email Address, Mobile Number, Phone number, Address, Country, State, City.
- Here, the Server Information screen will appear. Hit [Enter] to continue with the recommended HTTP and SSL port or enter the desired port and hit [Enter]
- Now, the Proxy Settings screen will appear. Select 1 if you wish to Enable Proxy Settings. Or select 2 if you do not wish to enable proxy settings.
- If 1 is selected, then enter the Proxy Server IP, port and the desired authentication method.
- Next, Authentication screen will appear. Hit [Enter] if you wish to continue with the email address provided in Customer Information screen, or enter desired Administrator email address (this is the username of Administrator user who logs in to the EPP 8.4 console. Please make sure you are entering the correct email address without any typographical errors). Enter and confirm the password for Administrator user.
- Select 1 to specify the Client credentials, 2 to proceed without it.
- After the client credentials are provided (or skipped), select 1 to save the summary file

(recommended) or 2 to continue without saving.

- The installation of EPP 8.4 server will begin. It will take 15-20 mins (time can vary based on the system configuration) to complete the installation.
- Once the EPP 8.4 server is installed, it will ask you to change the password of the **epp** user you used to configure the server. You need to relogin with the changed password.

```
OVA configuration completed

After OVA configuration, epp user password is not changed. You must change the password.

New Password
Type Password and hit [Enter] to continue

Confirm Password
Type Confirm Password and hit [Enter] to continue

The Password has been changed successfully.

Please re-login to apply changes.
To exit, hit [Enter]
```

- After re-logging in, it will show you below options (each time the **epp** user logs in).

```
OVA configuration completed

Console can be accessed by : https://[IP Address]/eps/login

1) Restart stopped/inactive Services
2) Collect Logs
3) Reboot
X) Exit

Please enter your choice
```

- Hit 1+ [Enter] to – Restart stopped or inactive EPP 8.4 services.
- Hit 2 + [Enter] to – Collect the EPP 8.4 logs. These logs will be requested by Seqrite Support team whenever you reach out to them with an issue that requires Support team's guidance.
- Hit 3 + [Enter] to – Reboot the VM.
- Hit X + [Enter] to – exit the VM session, it will take you to the VM login screen.

Now you can proceed to activate EPP 8.4, either online or offline, depending on the setup you created.

Steps to Offline Activation

Pre- requisites:

When the EPP 8.4 server has no internet connectivity and needs to be activated, such offline activation can be completed with the help of an online machine equipped with *Support Activation* utility. In this case, we have two servers/machines that we work with:

1. The EPP 8.4 server machine (offline)
2. The *Support Activation* machine
 - a) Should be an Ubuntu Linux Machine
 - b) Must have Internet Connection

The second machine, has *Support Activation* utility, will have the following:

- *offlinesupportactivation.sh* & *qh-eps-offline-activation-tool.jar* files under the */opt/offline/* directory.

Link to download the Support Activation utility:

- https://dlupdate.quickheal.com/builds/seqrite/84/en/offlinesupportactivation_8.4.zip

Follow the below mentioned steps for the offline activation:

3. After the successful installation, Go to
 - a) */opt/Seqrite_EndPoint_Security/tools/offline_activation/* directory on the EPP 8.4 offline server
4. Copy the *offline activation.txt* from the offline **EPP 8.4** server to the following location:
 - a) */opt/offline/* directory on the *Support Activation* server/machine that has internet connection.
5. After copying the *offlineactivation.txt* to the Support Activation machine, under the */opt/offline/* directory, run the *offlinesupportactivation.sh* using the below command:

bash offlinesupportactivation.sh
6. It'll ask to enter the product key now, enter the product key and press Enter.
7. Below options will be displayed

```

root@EPPAPTPLV085T:/opt/offline# bash offlinesupportactivation.sh
Enter the productkey :
Type Product Key with format XXXXX-XXXXX-XXXXX-XXXXX, and hit [Enter]
02543-02501-02505-02500

Enter the server type:
1. EPP Server
2. Control Center Server (Multisite Mode)
3. Site Server (Multisite Mode)

```

- a) For Normal installation of EPP server activation or License sync select the first option
 - b) For Control Centre / AGR activation or License sync select second option
 - c) For Control Site Server / SSR activation or License sync select Third option
8. Perform the activation or License sync by selecting the appropriate option as mentioned below.

```

Select the operation you want to perform and hit [Enter]
1. Activation
2. License Sync

```

9. A message saying '**Seqrite Endpoint Protection has been activated successfully**' will be displayed.
10. This will produce one file named as following: ofresponse.txt in the same directory i.e.
 - a) /opt/offline/
11. Copy the ofresponse.txt file from the Support Activation machine to the offline **EPP 8.4 server** at this location:
 - a) /opt/Seqrite_EndPoint_Security/tools/offline_activation/ directory.
12. After, the ofresponse.txt file is copied successfully to the offline EPP8.4 server, run offlineclientactivation.sh at below mentioned location:
 - a. /opt/Seqrite_EndPoint_Security/tools/offline activation/ (from EPP 8.4 server) location
 - b. Now, Run with the below mentioned command on the offline **EPP8.4** server:

bash offlineclientactivation.sh

1. A message '**Activation successful**' will be displayed.

After successfully installing the EPP 8.4 server, as mentioned in the Note of 'Configure Server' section above, a prompt will ask you to change the password of the user you used to configure and install the EPP 8.4 OVA. This user is later used to restart the EPP 8.4 services or collect the logs as and when needed.

Log on to Server

1. Paste the console access URL in any browser. Example: `https://<provided IP Address>/login/eps`.

Supported Web Browsers:

- Google Chrome v67 and above
 - Mozilla Firefox v65 and above
 - Microsoft Edge.
2. Provide the credentials.

Seqrite Endpoint Protection console is ready to use.

Exiting the Setup

You can exit from the setup process by pressing **Control C** keys.

Confirmation message appears. Again, press Control C keys to exit the setup.